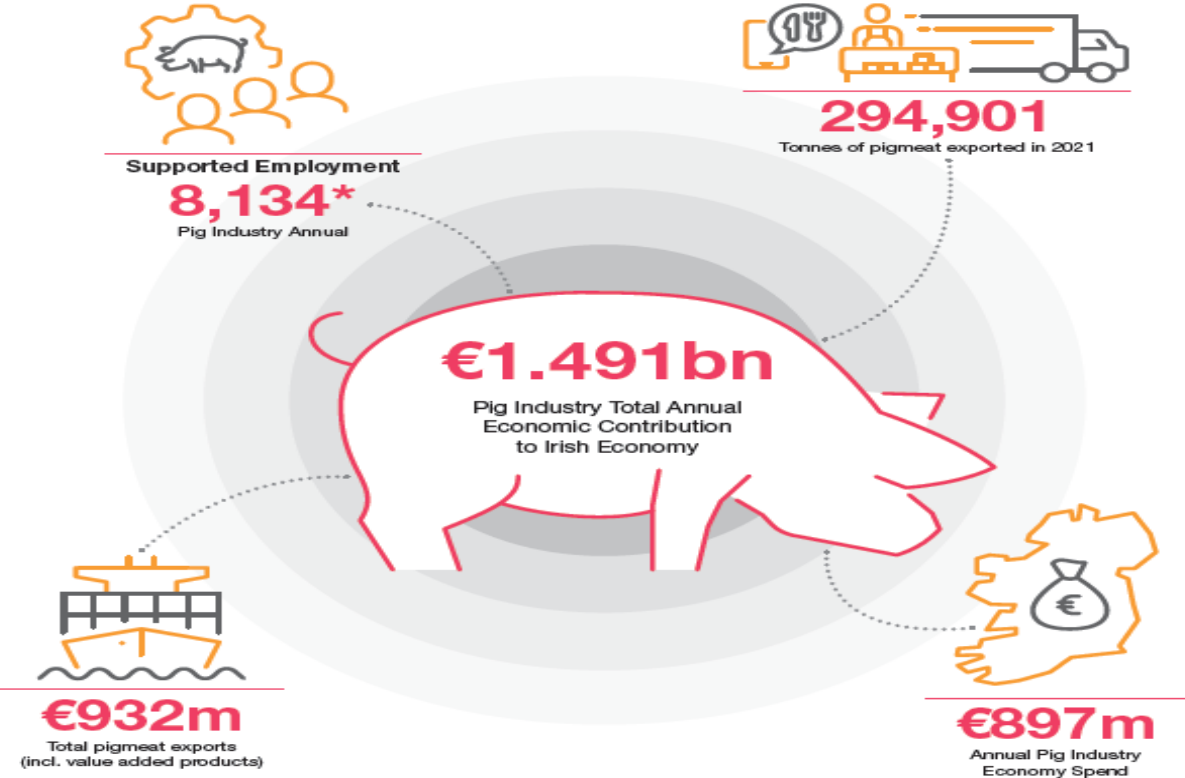




**Outlook Conference**  
**Michael McKeon**  
**13<sup>th</sup> Dec 2022**

# Value of Pig Sector To Irish Economy\*



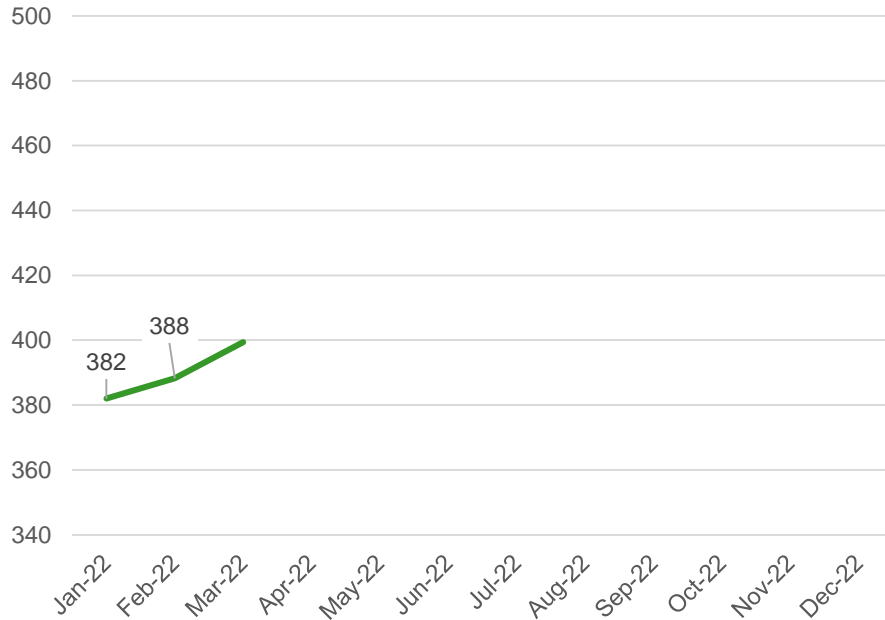
\* PWC Report 2022

# Feed Price



# Feed Price 2022

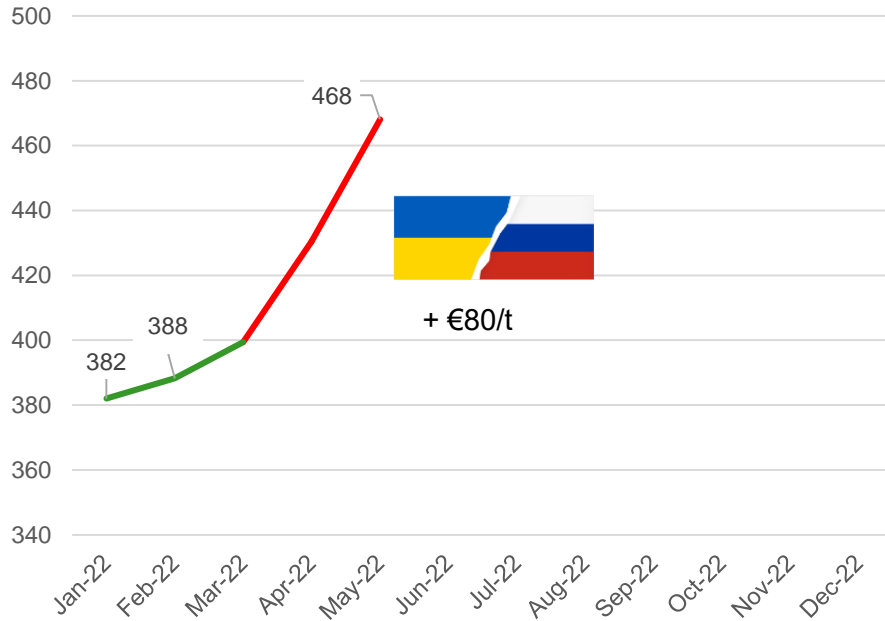
## Compound Pig Feed €/t



\* Teagasc Pig Dept.

# Feed Price 2022

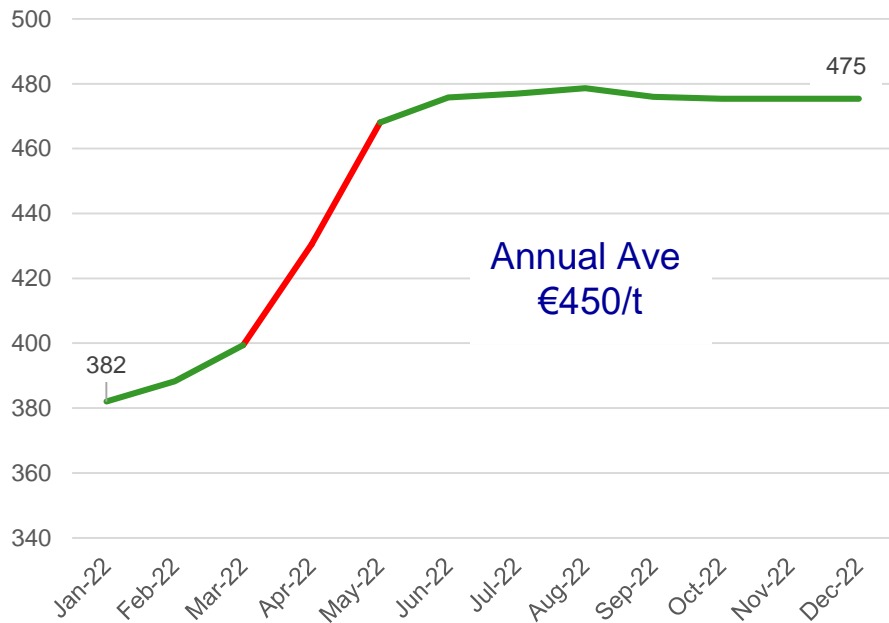
## Compound Pig Feed €/t



\* Teagasc Pig Dept.

# Feed Price 2022

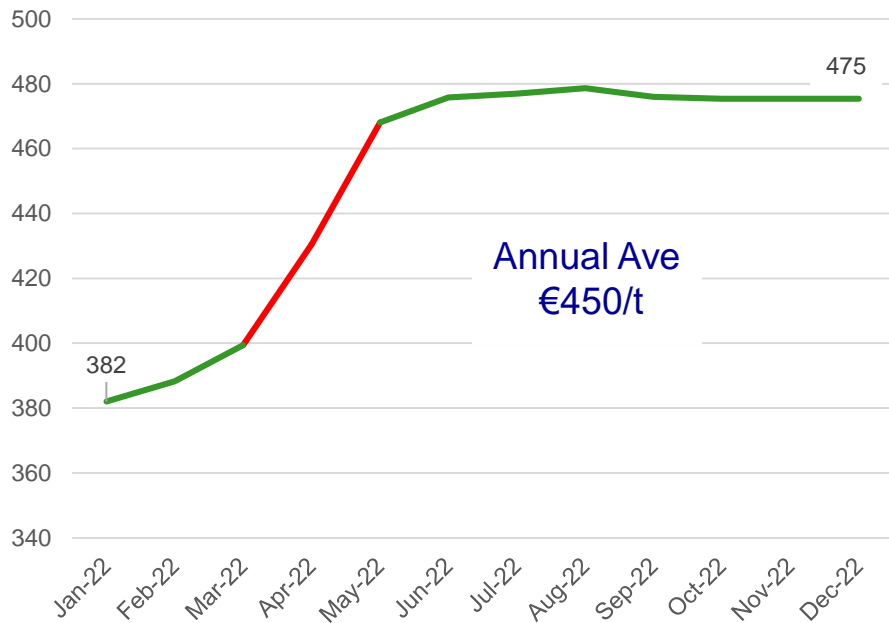
## Compound Pig Feed €/t



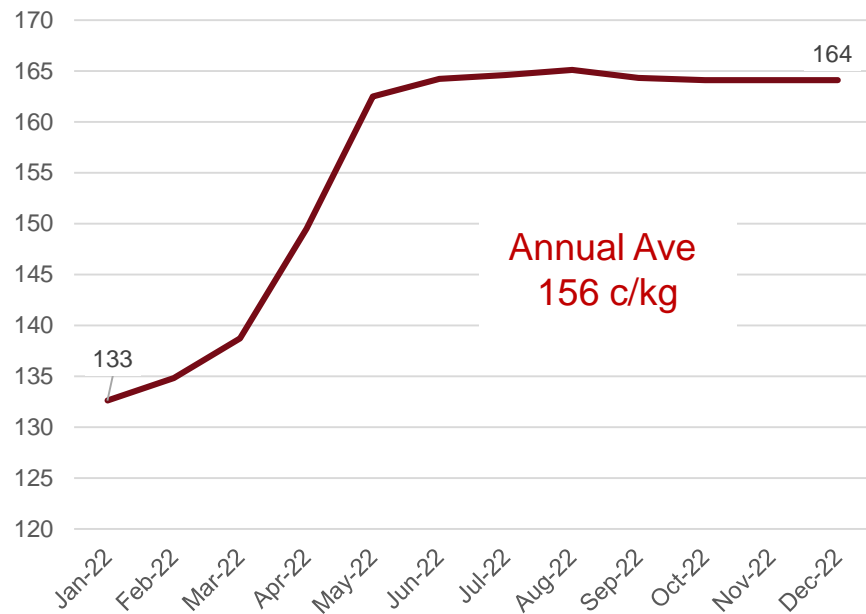
\* Teagasc Pig Dept.

# Feed Price 2022

## Compound Pig Feed €/t

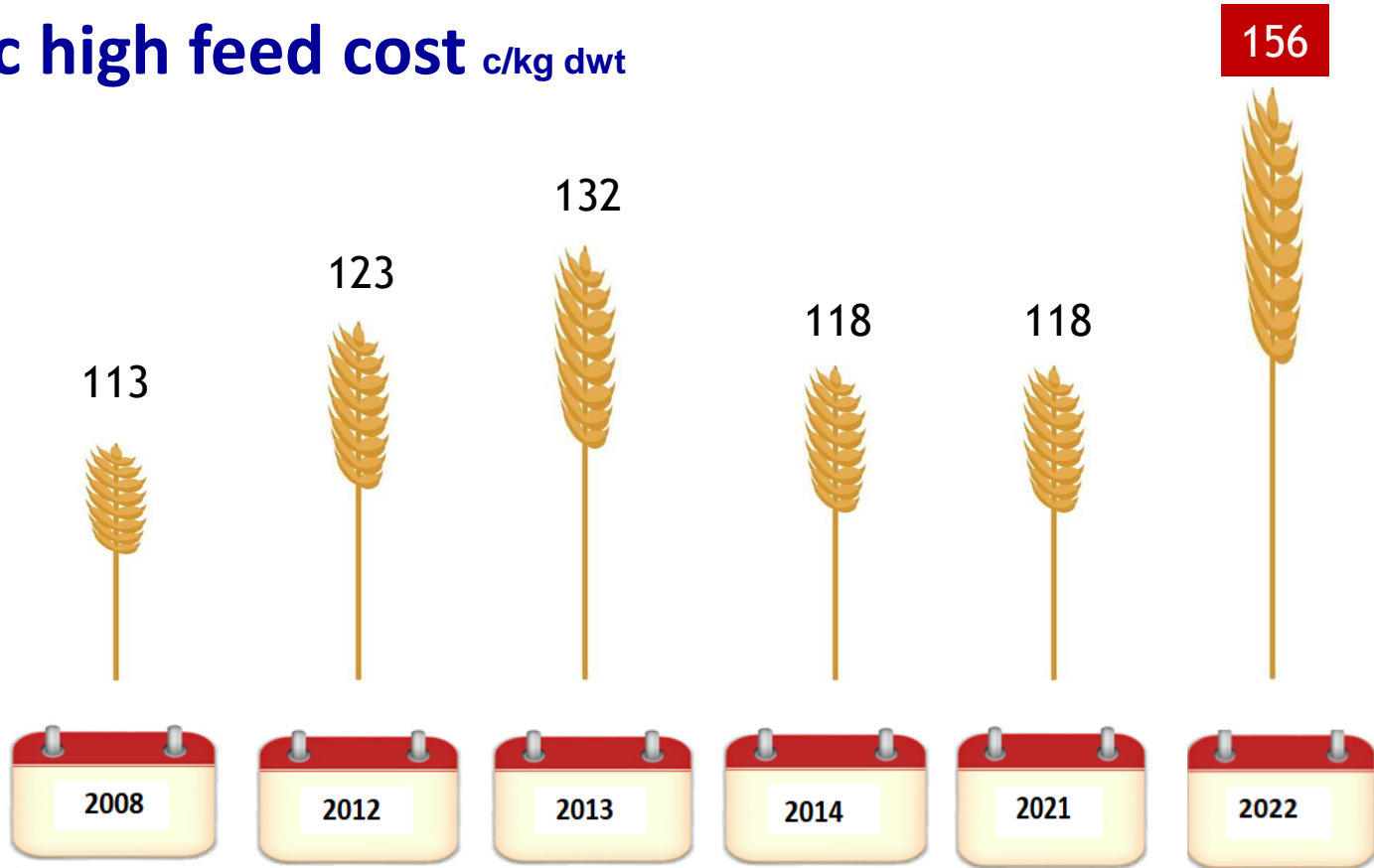


## Feed Cost c/kg



\* Teagasc Pig Dept.

# Historic high feed cost c/kg dwt



\* Teagasc Pig Dept.



# Feed outlook

## Europe



\* Winter Planting

## Australia



\* Wheat harvest 34MT

## Argentina



\* Drought issue, yield?

## Brazil



\* Soya Planting good

## Russia



\* Bumper harvest export

## Ukraine Corridor



\* Agreement till March 23

## Irish Pig Feed Price 2023



- Feed ingredient price reducing
- Higher ave. price than 2022

# Pig Meat



# Pig Price 2022: c/kg



\* Teagasc Pig Dept.

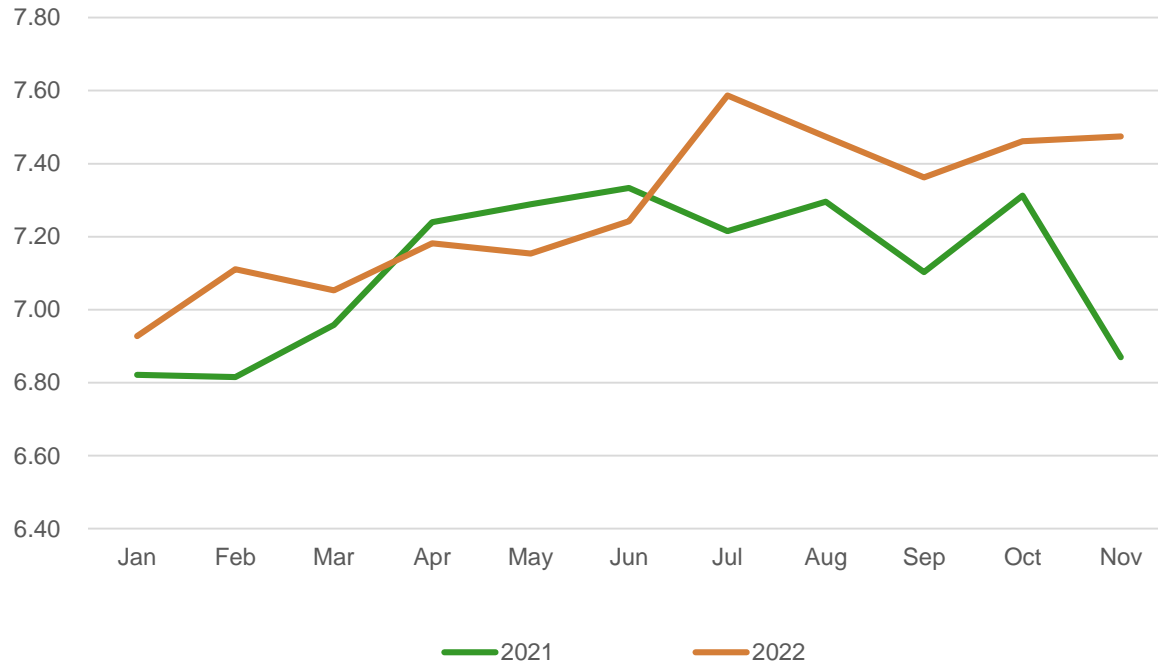
# Pig Price 2022: c/kg



\* Teagasc Pig Dept.

# Pigmeat Irish Retail

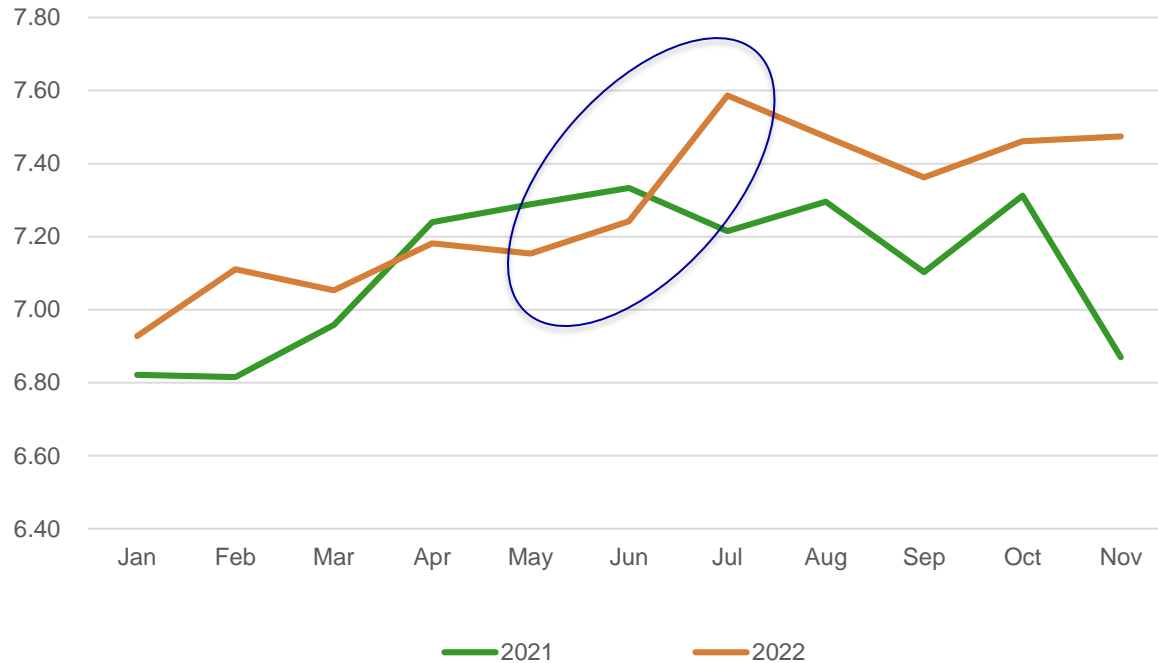
Ave Retail Multiple Pork Price\* €/kg



\* Kantor 2022 based on multiples

# Pigmeat Irish Retail

## Ave Retail Multiple Pork Price €/kg

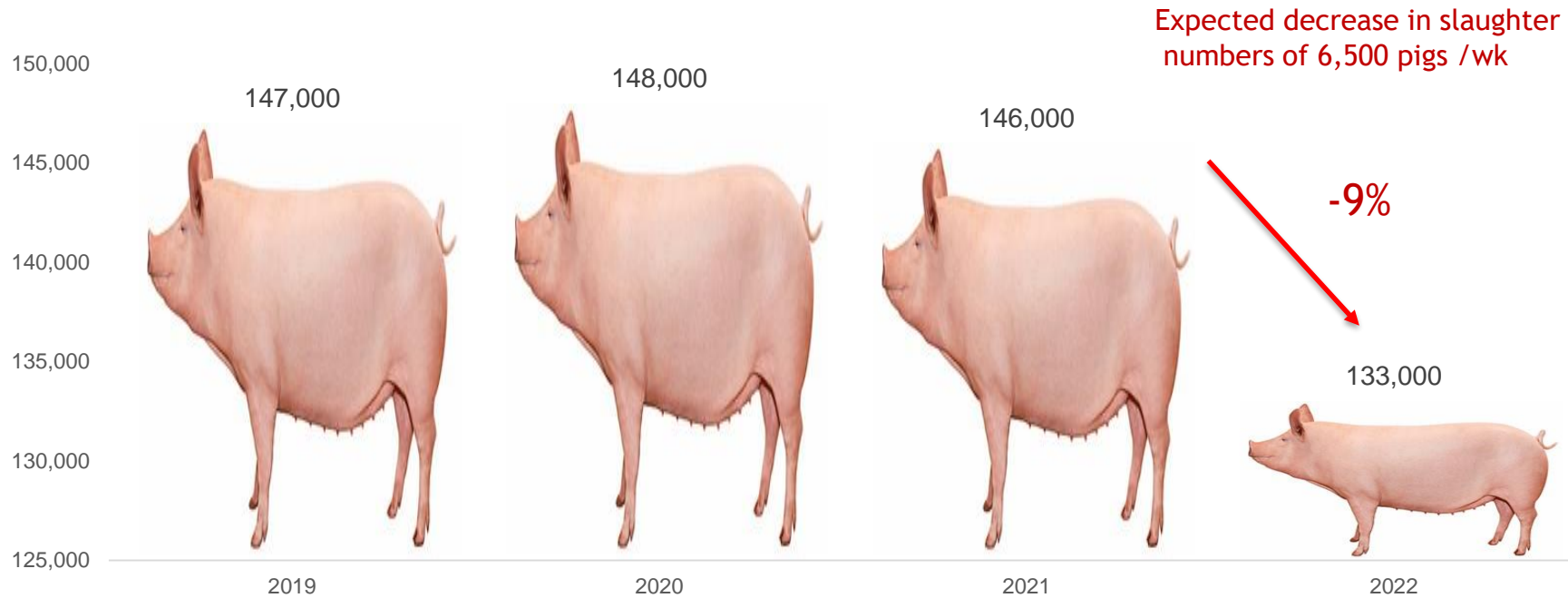


\* Kantor 2022

# Culling



# Irish Sow Herd





# EU & UK Sow Herd\*^

Germany



-9%

Denmark



-9%

Poland



-18%

UK



-18%

Spain



-1%

\* June 2022 vs June 2021

^ Eurostat

# Exports



# Exports\*

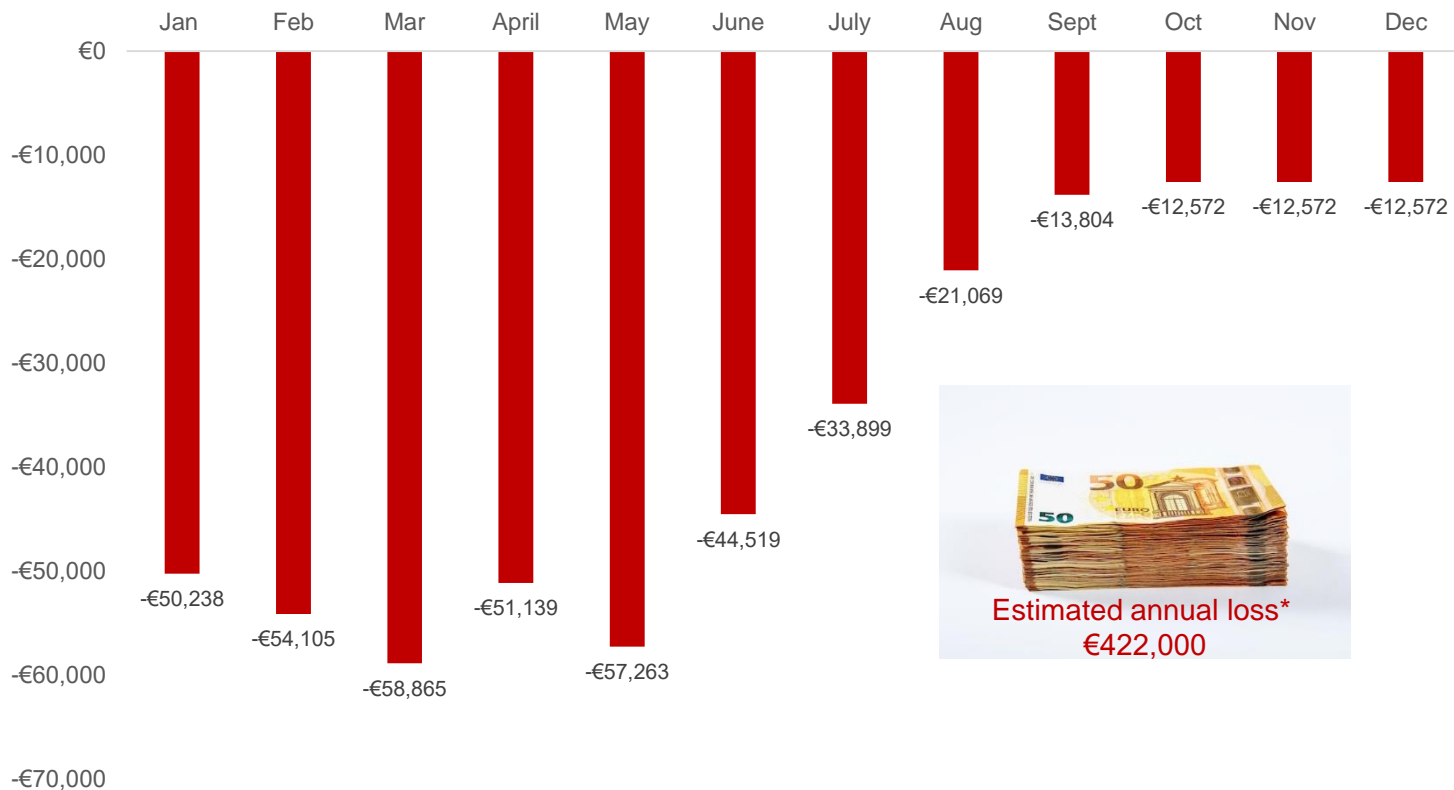
		Jan-Sept 2018		Jan-Sept 2019		Jan-Sept 2020		Jan-Sept 2021		Jan-Sept 2022	
		€000	Tonnes	€000	Tonnes	€000	Tonnes	€000	Tonnes	€000	Tonnes
China		55,019	42,178	107,918	61,532	138,206	66,299	158,707	74,283	89,452	45,329
GB		305,781	76,800	308,437	70,558	259,787	57,592	231,061	43,090	233,557	40,346
NI		44,468	8,883	37,792	8,250	39,591	8,263	64,763	16,215	78,305	17,351
Japan		27,905	10,195	28,764	9,034	29,117	7,750	35,594	10,438	43,294	12,515
<b>Export Total ALL</b>		<b>617,453</b>	<b>213,268</b>	<b>651,708</b>	<b>209,424</b>	<b>649,313</b>	<b>201,015</b>	<b>697,336</b>	<b>215,847</b>	<b>713,811</b>	<b>215,594</b>

- Chinese exports lower in 2022 but starting to increase again
- Chinese pig price has increased from 12 CNY/kg in March to 22 CNY/kg now (+80%)

# Financial



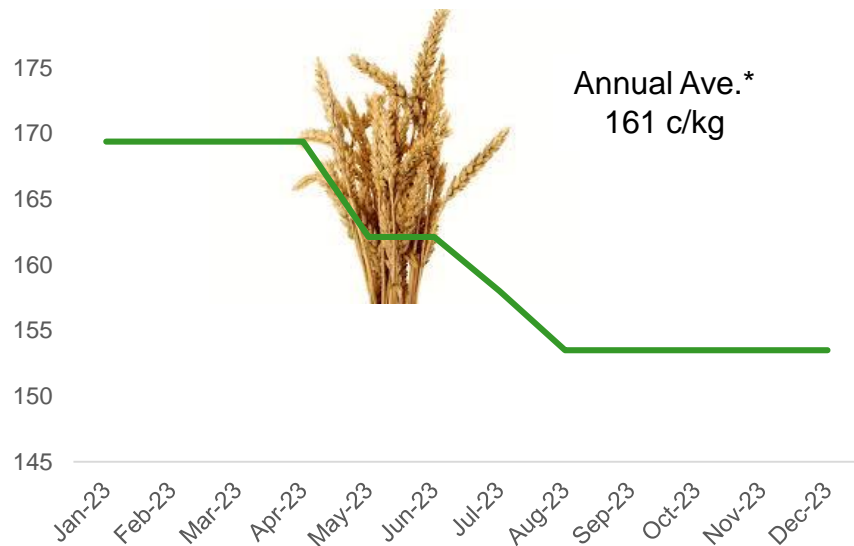
## Monthly Cash Loss 2022\* - ave 600 sow unit



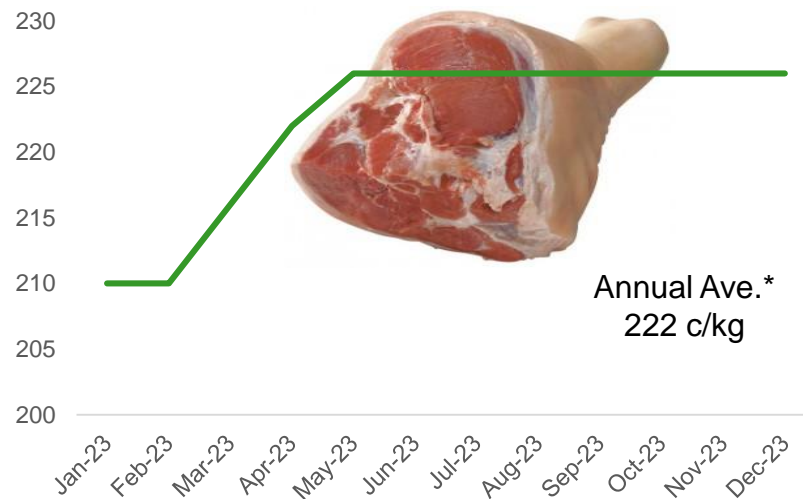
\* Excluding PEPS payment

# Feed & Pig 2023

## Feed Cost c/kg dwt

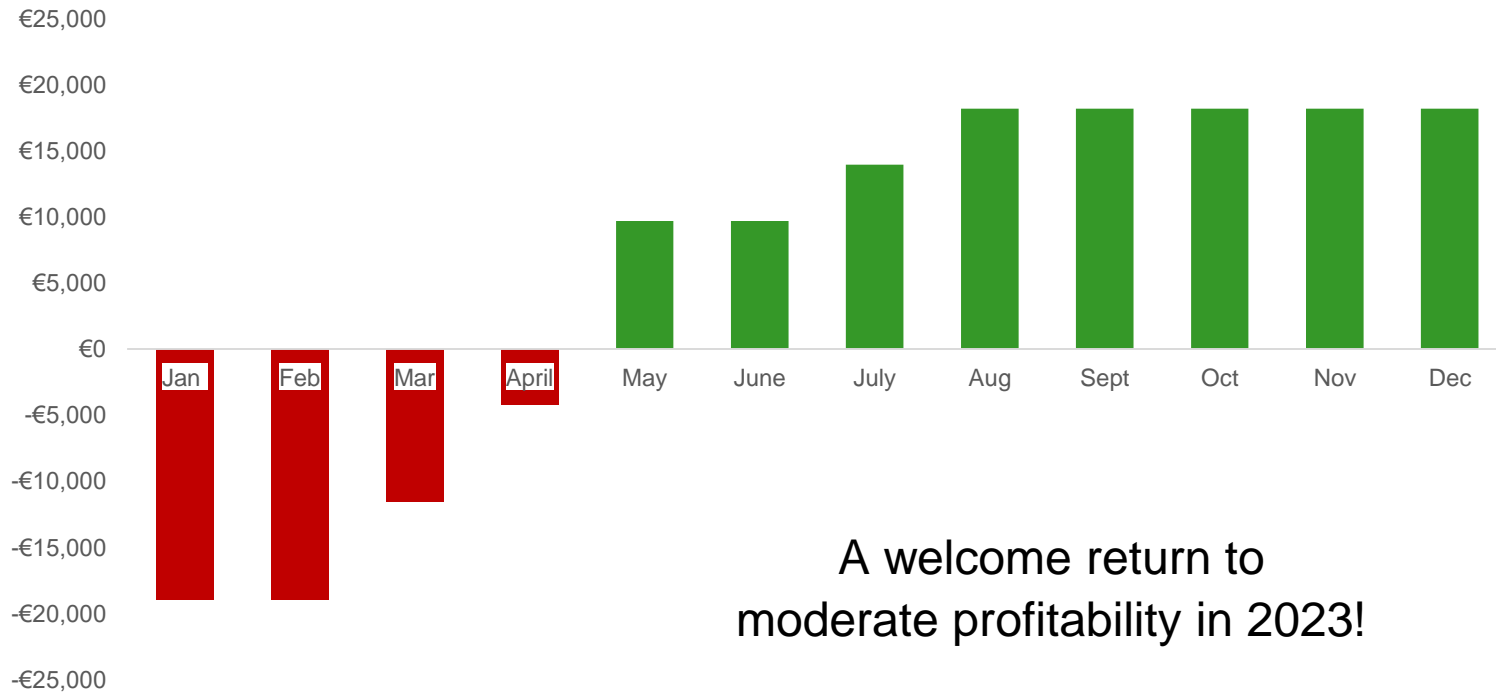


## Pig Price c/kg dwt



\* Estimated

# Monthly Cash Income 2023\* - ave 600 sow unit



A welcome return to moderate profitability in 2023!

\* Estimated PPD

**Thanks For Your Attention!**

