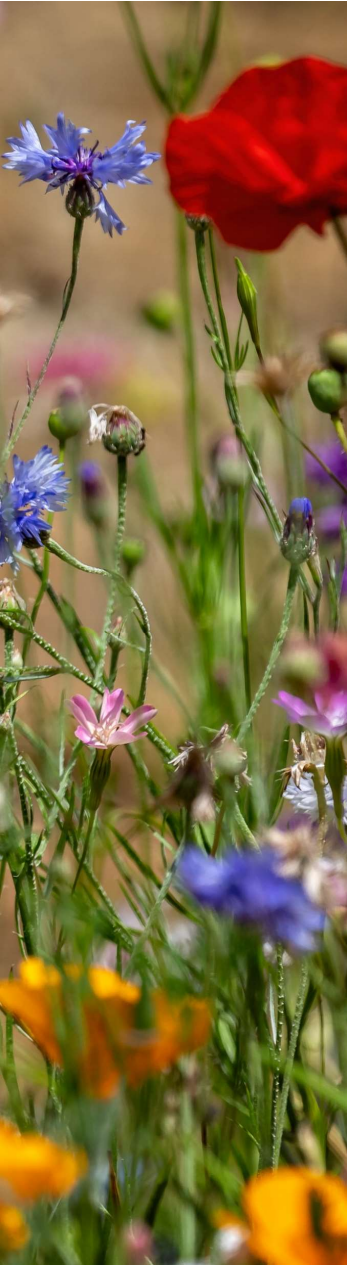




A background to LEAF: achievements, activities, and aspirations

Rebecca Davis, Technical Coordinator

Mollie Burns, Technical Officer



Outline

- Who are LEAF?
- What is Integrated Farm Management?
- The LEAF Network
- LEAF Marque Assurance Scheme
- Strategy and next steps
- Questions

Who we are...

LEAF (Linking Environment And Farming) is the leading organisation delivering and promoting **Climate Positive, regenerative, resilient,** and exemplar **agroecological farming** at an increasingly global level.

Working with stakeholders exploring new ways to deliver productivity and prosperity among our farmers, enrich the environment and engage young people and society in a valuable and meaningful way.





Our History

- Set up in **1991** as a 3-year project, now celebrating over **30 years!**
- Registered charity, with a board of trustees & Honorary President (HRH Countess of Wessex)
- LEAF Marque established 2002
- LEAF Open Farm Sunday pilot 2006
- Global
- LEAF Education launched 2018



LEAF's 3 Workstreams

**Knowledge
Generation &
Exchange**

**Market
Opportunities**

**Education &
Engaging
Society**

Integrated Farm Management

Integrated Farm Management (IFM) is a whole farm business approach that delivers more sustainable farming.

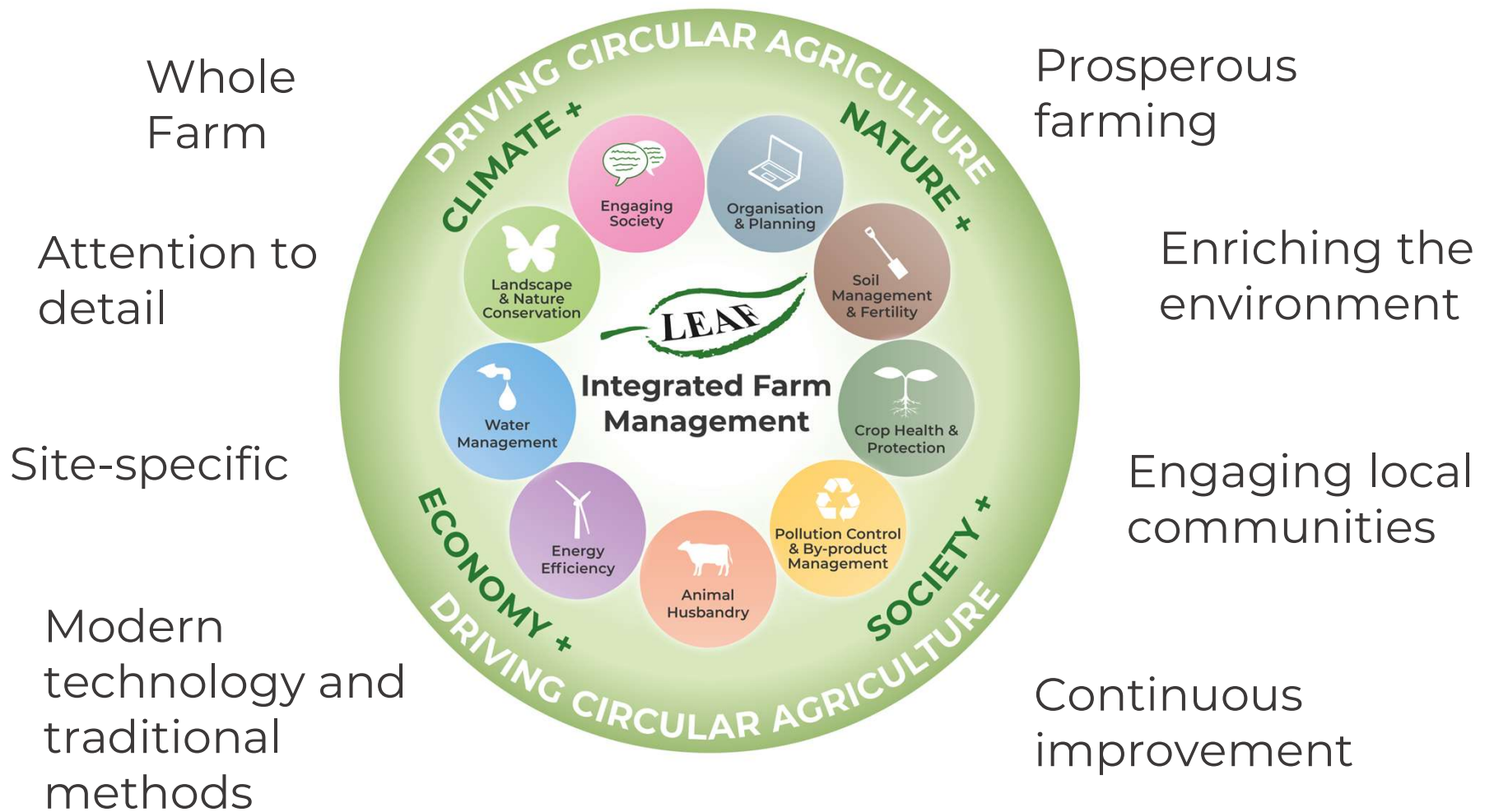
- **economic** performance
- **environmental** quality
- **social** health

Whole Farm and site-specific approach, with a focus on continuous improvement and mindset.





Integrated Farm Management





LEAF Demonstration Farms



- Agroforestry
- Electric Weed control
- Nature based solutions
- ELM Test and Trials
- Intercropping projects
- AgriCaptureCO₂
- Ecosystem Services
- Slurry project
- Rewilding projects
- Small Robot Company
- Biological Pest control
- Early disease detection
- Robotic harvesting
- Carbon Accounting



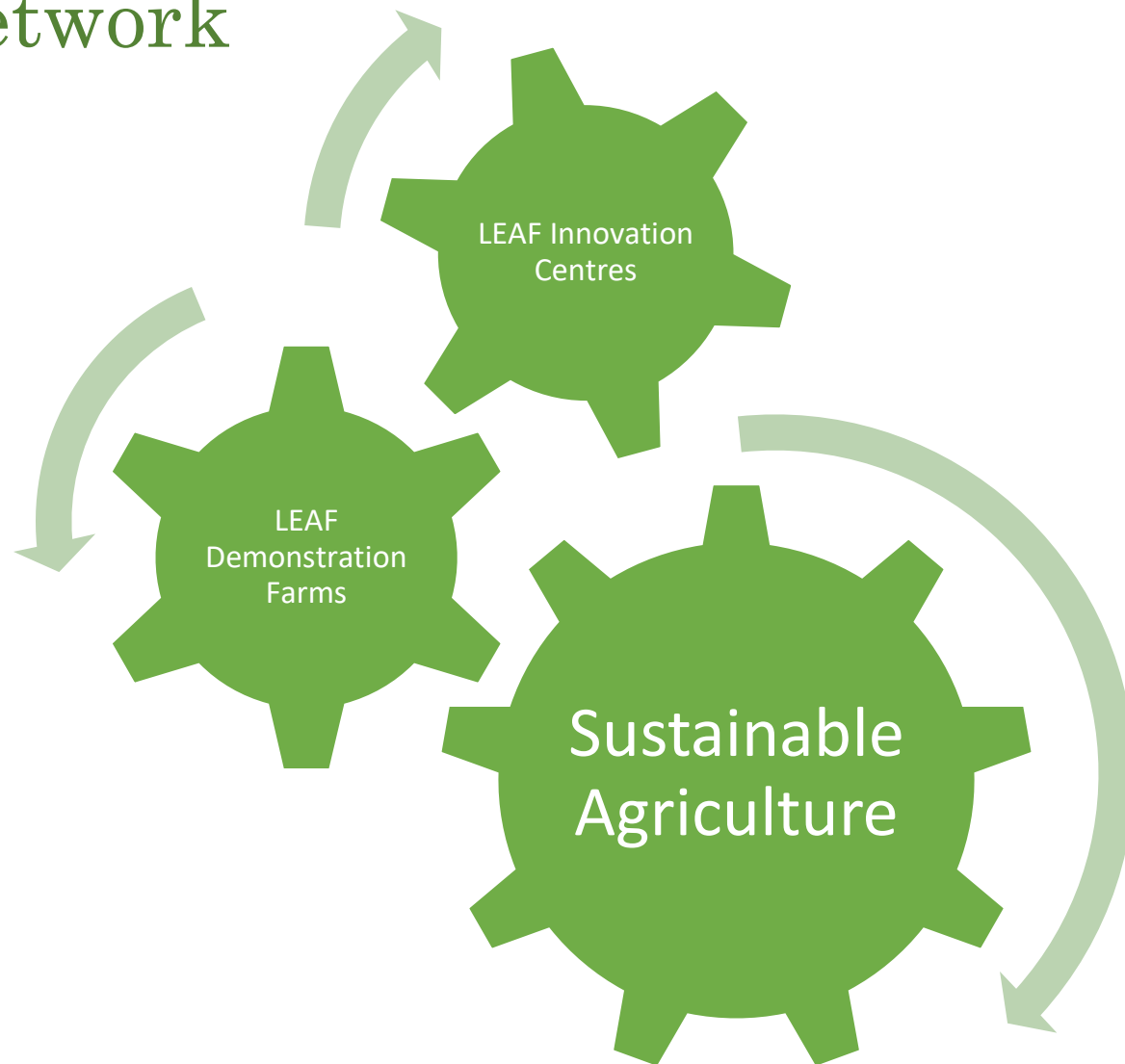
LEAF Innovation Centres



- Training courses
- Agri services (e.g., pest forecasting)
- Environmental footprinting
- Precision farming
- International Barley Hub
- DNA fingerprinting
- Dairy sensors
- Circular systems
- Agroforestry
- Impacts of milk and meat production
- Dairy UK Innovation Centre
- Catchment Sensitive Farming



LEAF Network





LEAF's Work



CEVAS
ACCESS TO FARMS
A partnership promoting quality educational visits to farms



LINKING ENVIRONMENT AND FARMING
BEACON of EXCELLENCE
in Regenerative Agriculture



SEAMS

AGRICOLOGY 



AgriCapture CO₂





LEAF Marque

An independent environmental assurance system recognising more sustainably farmed products

- Underpinned by Integrated Farm Management
- Demonstrates economic, environmental and social impact
- Global
- Robust, credible, independent
- ISEAL Code Compliant member

Earned Recognition

Lighter touch from the EA

Engagement with ELMS



Integrated Farm Management



LEAF Marque

Whole Farm



Site Specific



Continuous Improvement



All enterprises



Plan-Based



Target Setting & Evaluation

Monitor

Plan

Actions



LEAF Marque Standard

- Based on nine IFM principles
- Used additional/complementary to approved baseline systems (e.g., Red Tractor, GLOBALG.A.P.)
- LEAF Marque Standard v16.0 published, but not effective
- To be LEAF Marque certified, all Essential Control Points must be achieved
- Hybrid Outcome-Based
- Global, relevant to all enterprises (whole-farm)



LEAF Marque Standard

Version 15.0

LEAF Marque is an environmental assurance system recognising more sustainably farmed products.

877

LEAF Marque
certified
businesses

310,537

hectares on LEAF
Marque certified
businesses

Including:

134,130

hectares of
combinable crops

159,200

hectares of fruit
& vegetables

4,207

hectares of flowers
& ornamentals



19 countries with LEAF Marque certified businesses



Top countries
in terms of
hectarage:

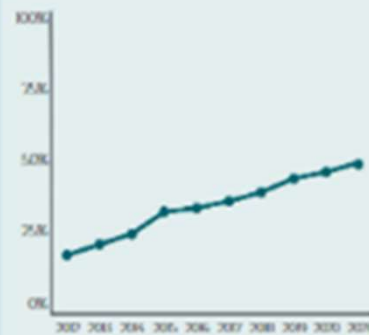
UK
245,639ha

Spain
25,381ha

France
14,242ha

Egypt
7,004ha

Italy
6,218ha



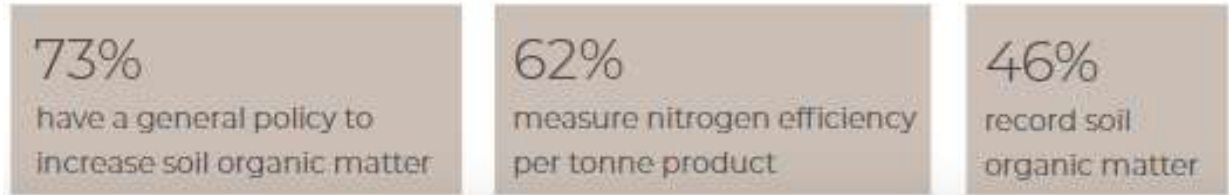
48%

of UK fruit & vegetables
are grown on LEAF
Marque certified farms



IMPROVED SOIL MANAGEMENT TO ENHANCE SOIL QUALITY & HEALTH

Of LEAF Marque certified businesses:





LEAF's 10-year Strategy

OUR VISION

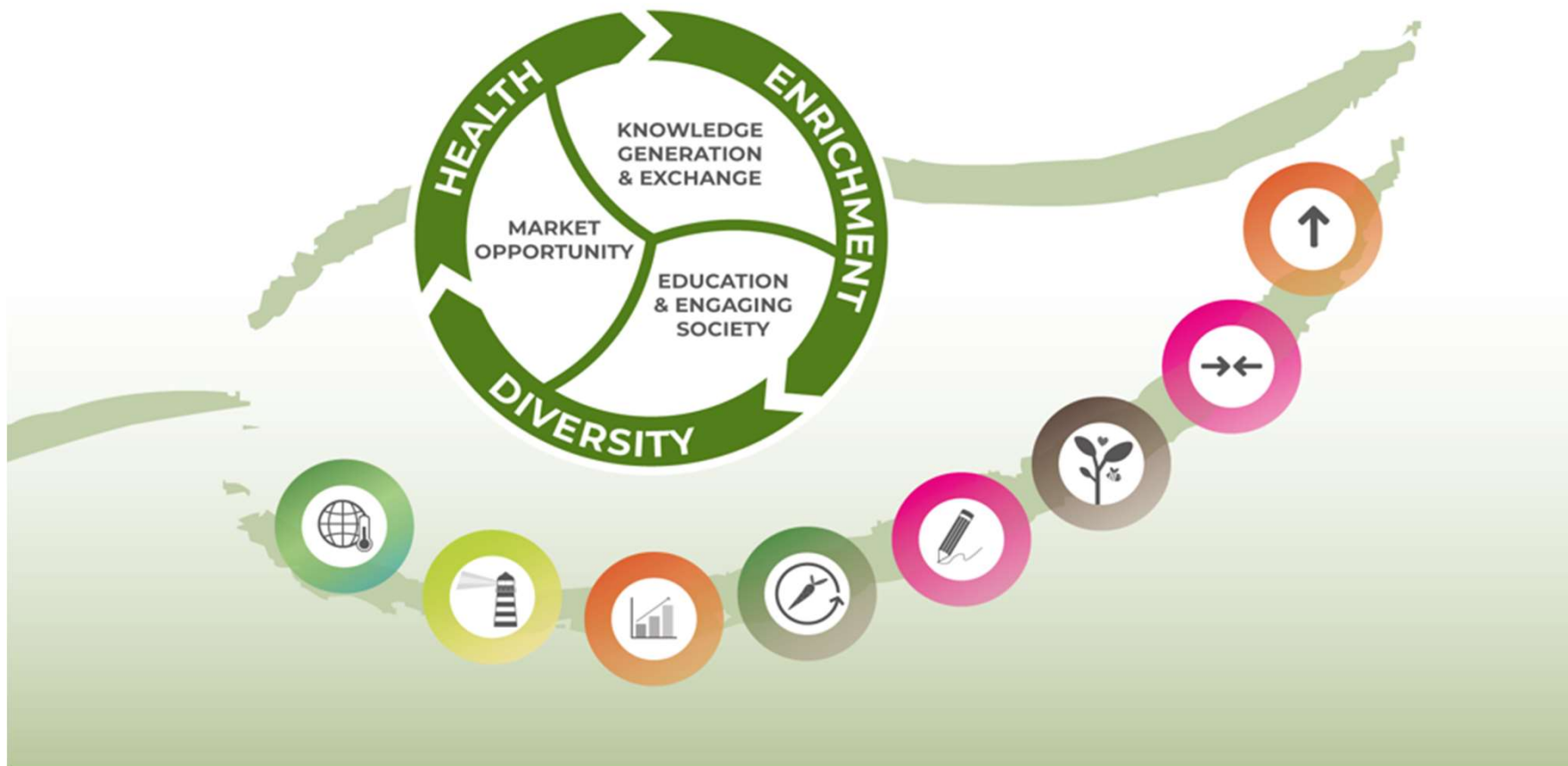
A global farming and food system that delivers **Climate Positive** action, builds resilience and supports the **health, diversity** and **enrichment** of our food, farms, the environment and society.

OUR MISSION

To inspire and enable more circular approaches to farming and food systems through **integrated, regenerative** and **vibrant nature-based solutions**, that deliver productivity and prosperity among farmers, enriches the environment and positively engages young people and wider society.



LEAF's 10-year Strategy





Links

<https://leaf.eco/farming/integrated-farm-management>

<https://leaf.eco/farming/leaf-marque>

<https://leaf.eco/farming/leaf-marque/leaf-marque-standard>

<https://leaf.eco/farming/leaf-marque/steps-to-be-leaf-marque-certified>

<https://leaf.eco/news-and-media/research/outcome-based-biodiversity-approaches>

<https://leaf.eco/farming/leaf-network>

<https://leaf.eco/about-leaf/working-in-partnership/beacons-of-excellence>

<https://leaf.eco/farming/simply-sustainable-series>

<https://leaf.eco/helpcentre>



Thank you! Any Questions?

rebecca.davis@leaf.eco 

mollie.burns@leaf.eco 

enquiries@leaf.eco 

www.leaf.eco 

@LEAF_Farming 

LinkingEnvironmentAndFarming 

LEAF (Linking Environment And Farming)
Stoneleigh Park
Warwickshire
CV8 2LG

