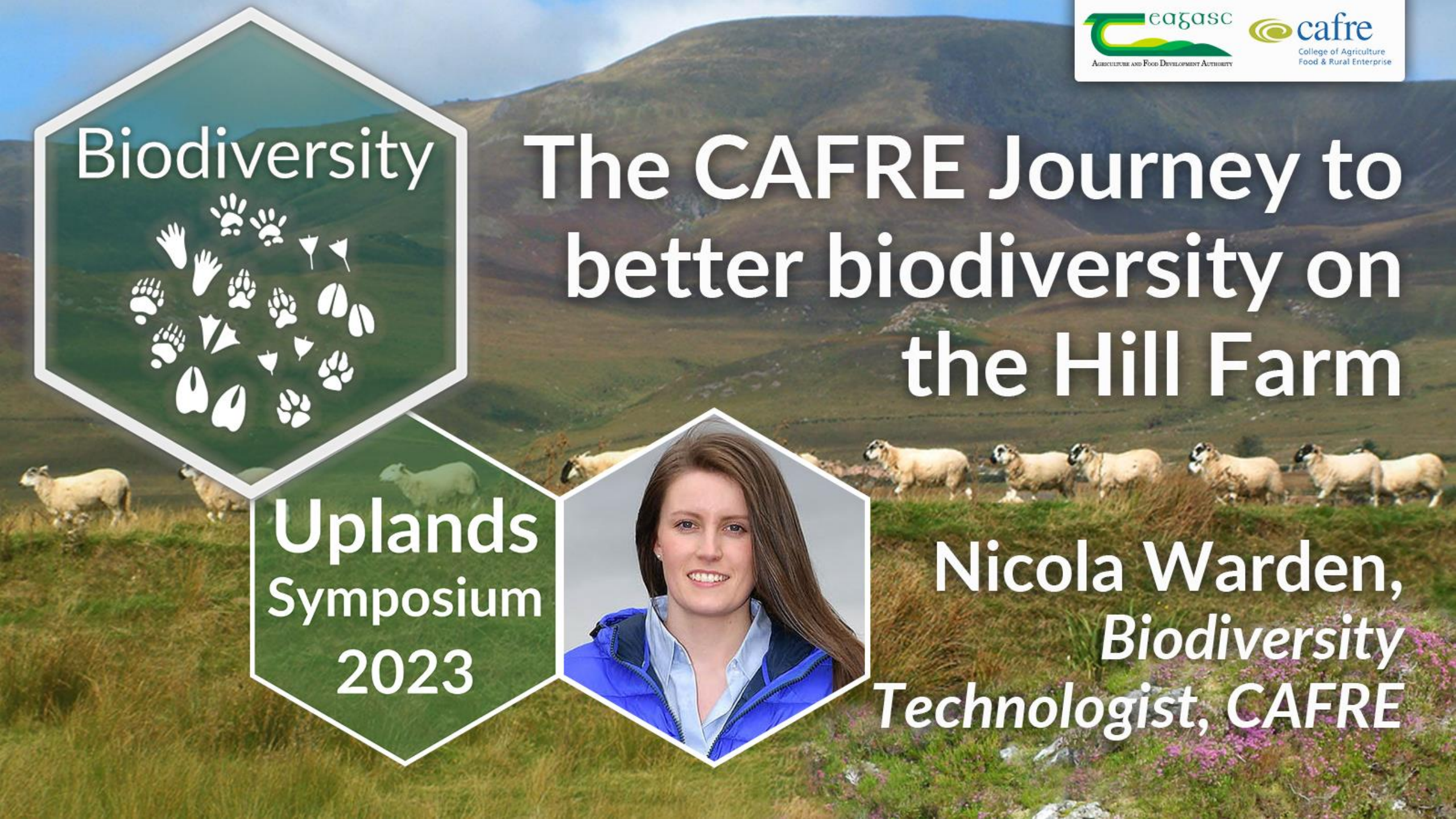




The CAFRE Journey to better biodiversity on the Hill Farm



Nicola Warden,
Biodiversity Technologist, CAFRE





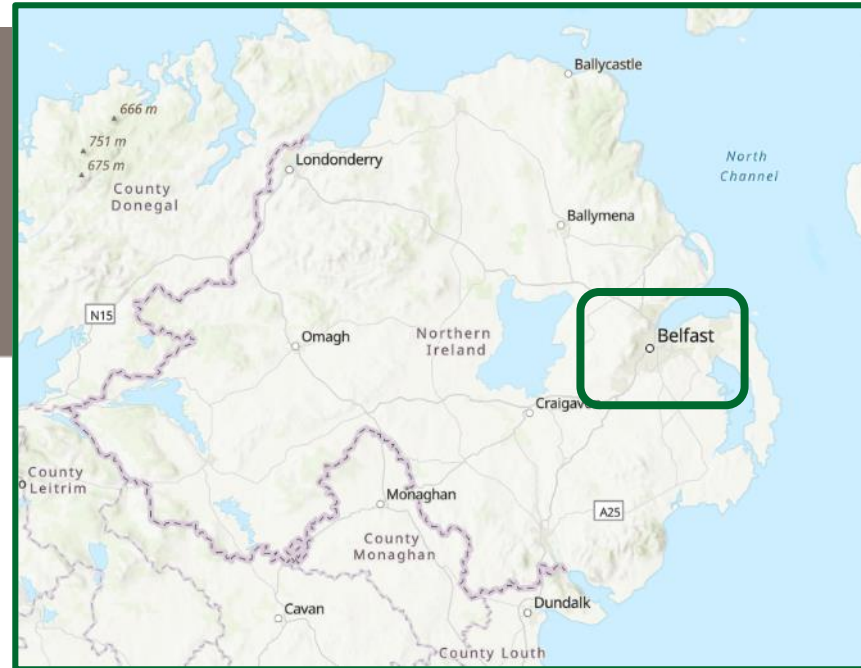
Department of
**Agriculture, Environment
and Rural Affairs**



**Food, Farming
& Rural Affairs**



**Veterinary Service
& Animal Health**



**Strategic Planning
& Corporate Services**



**Northern Ireland
Environment Agency
(NIEA)**

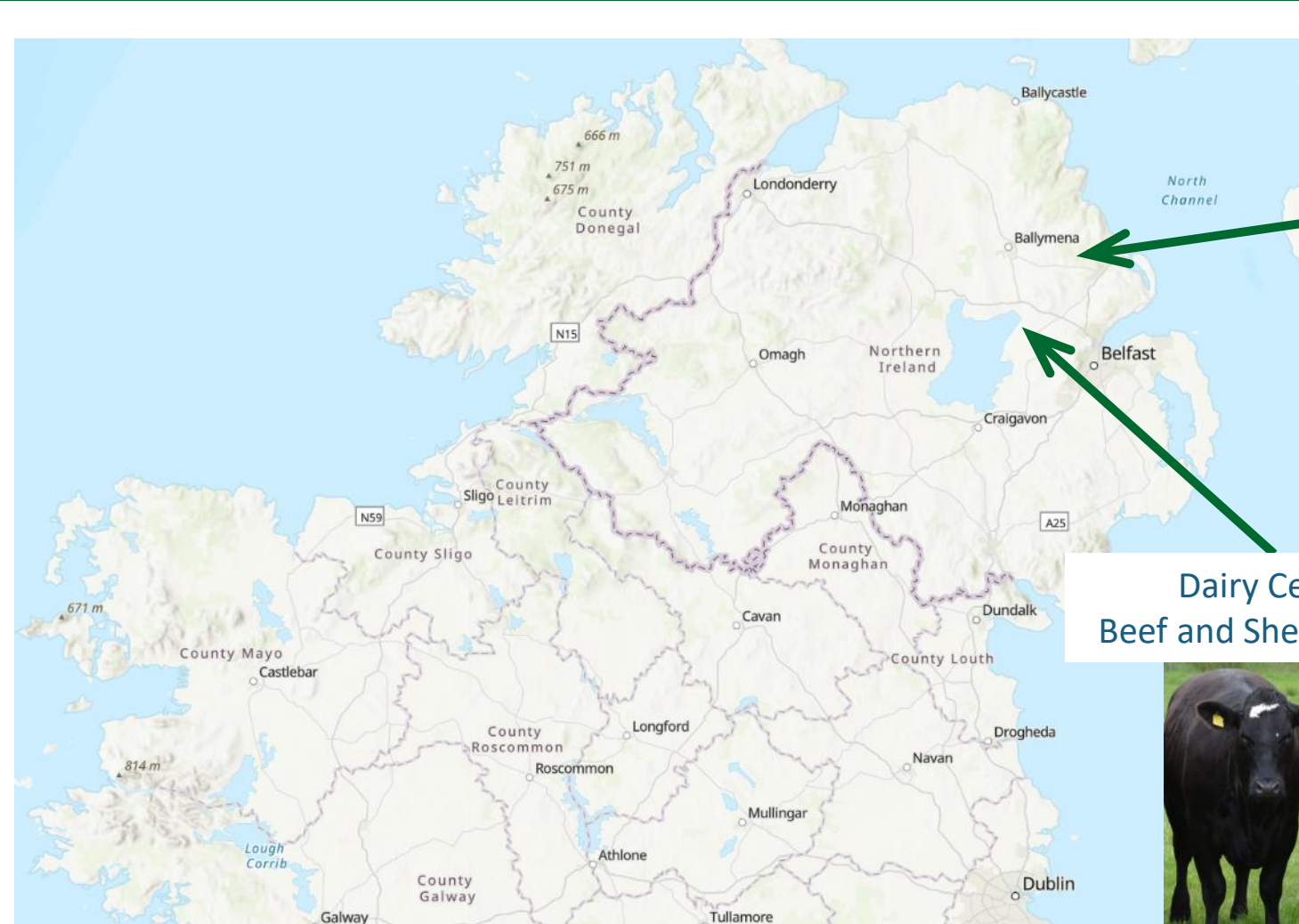




cafre

College of Agriculture,
Food & Rural Enterprise





Hill Farm Centre



Dairy Centre
Beef and Sheep Centre



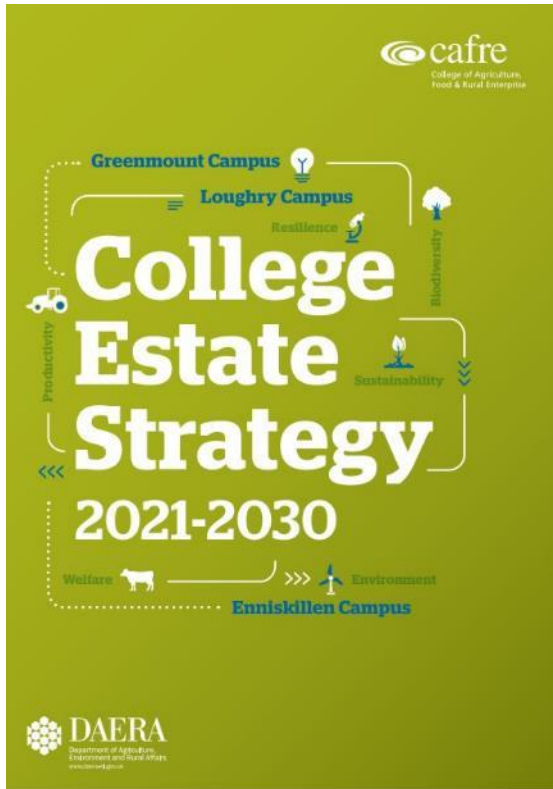


CAFRE Technologist



CAFRE Estate Strategy Targets

2021 - 2030



1 CAFRE to be 50% Carbon Neutral by 2030

2 Eliminate the use of peat in horticulture by 2025

3 CAFRE air quality to not impact on local habitats and health by 2030

4 Reduce anti microbial usage by 95% by 2030

5 CAFRE water to be of “Good” quality status by 2030

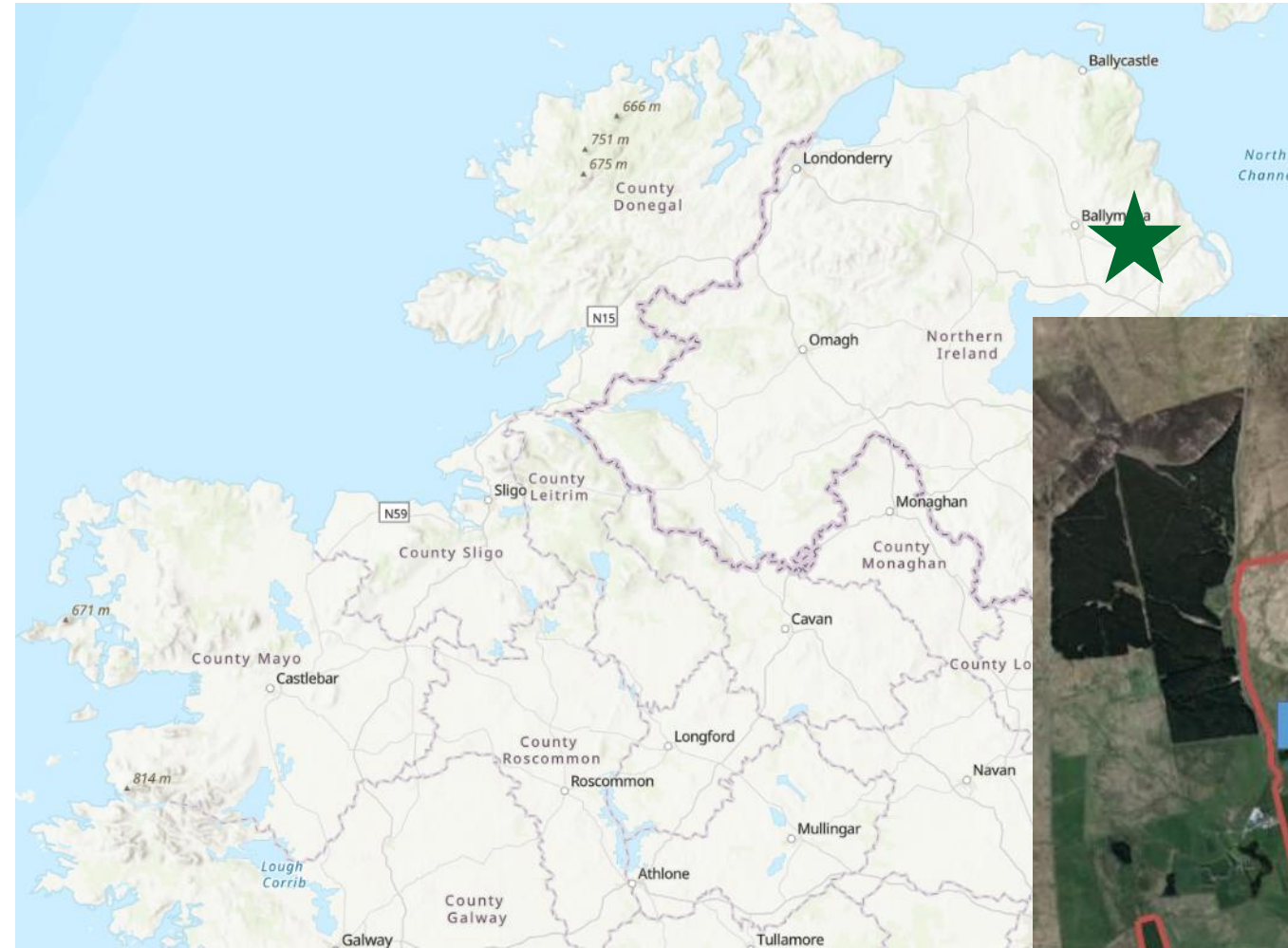
6 CAFRE productive land to be in “Good” soil health status by 2030

7 Eliminate CAFRE land fill waste by 2025

8 CAFRE habitats to be in favourable condition by 2030



Hill Farm Centre



Hill Farm Centre

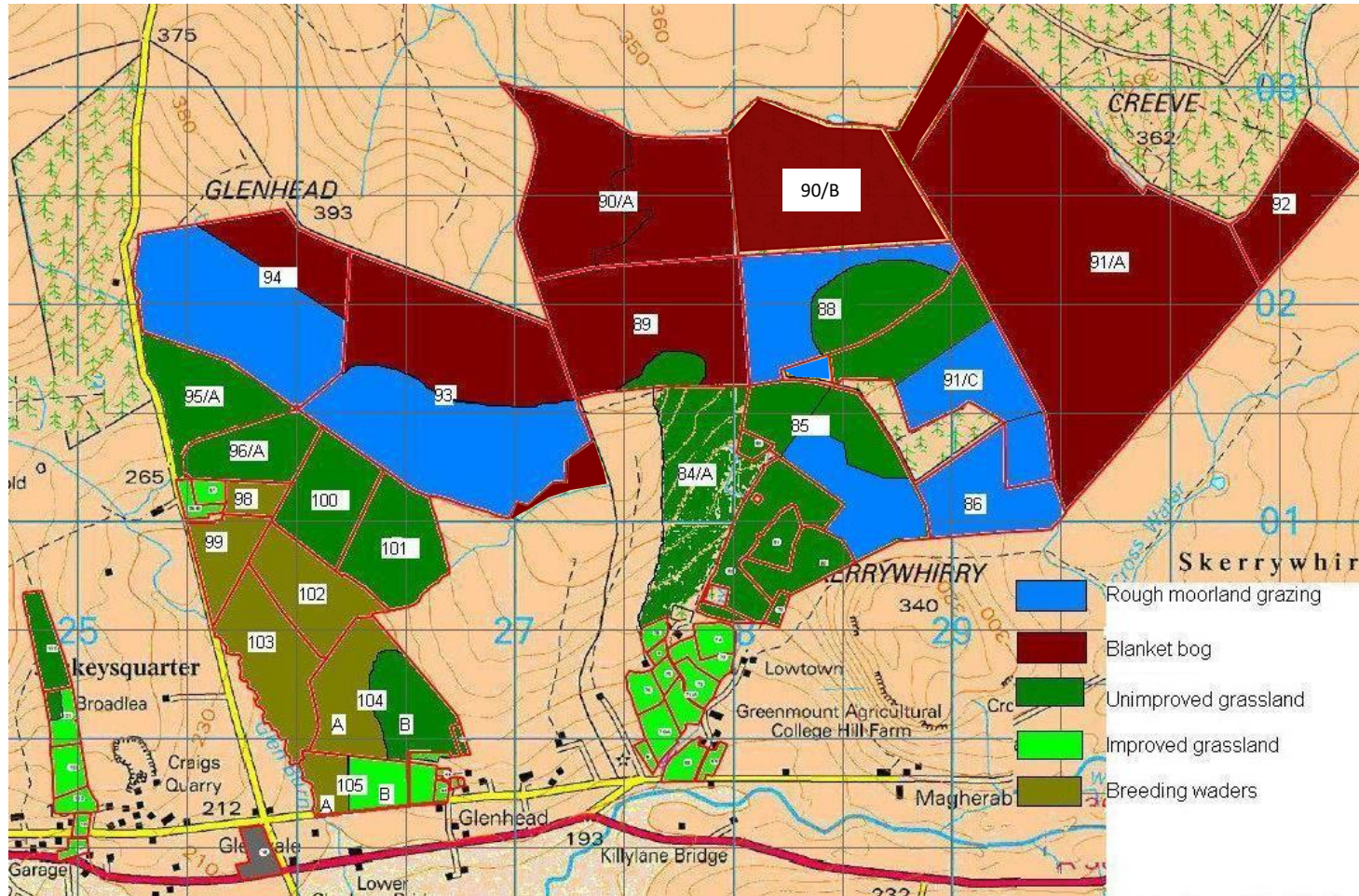
<u>Herd Performance</u>	Herd three year Average
Number of Cows to Bull	112
Scanning %	94
Calving Index	371
Cow Weight (KG)	638
Calf Birth Weight (kg)	35.2



<u>Flock performance</u>	Three-year average	
	Hill Flock	Upland flock
No. of ewes to the ram	349	758
Scanning %	1.48	1.81
Ewe weight (kg)	54.9	64.5
Lamb Wean weight (kg)	27.6	29.95
Kg lamb/Kg ewe mated.	0.63	0.86



Hill Farm Centre





**QUEEN'S
UNIVERSITY
BELFAST**

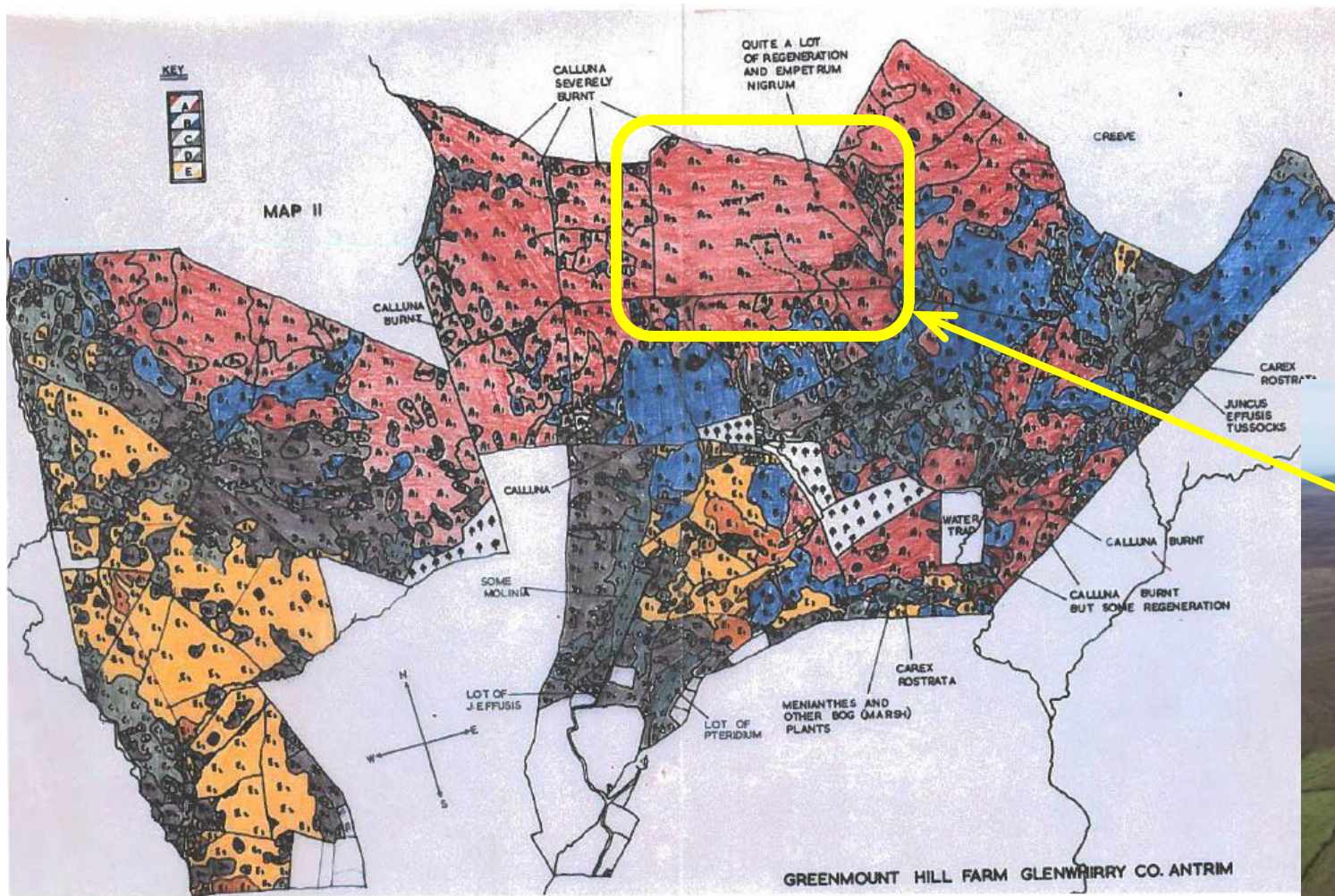
afbi AGRI-FOOD
& BIOSCIENCES
INSTITUTE



Department of
**Agriculture, Environment
and Rural Affairs**

www.daera-ni.gov.uk

History of the Hill Farm



Glenwherry Hill Regeneration Partnership

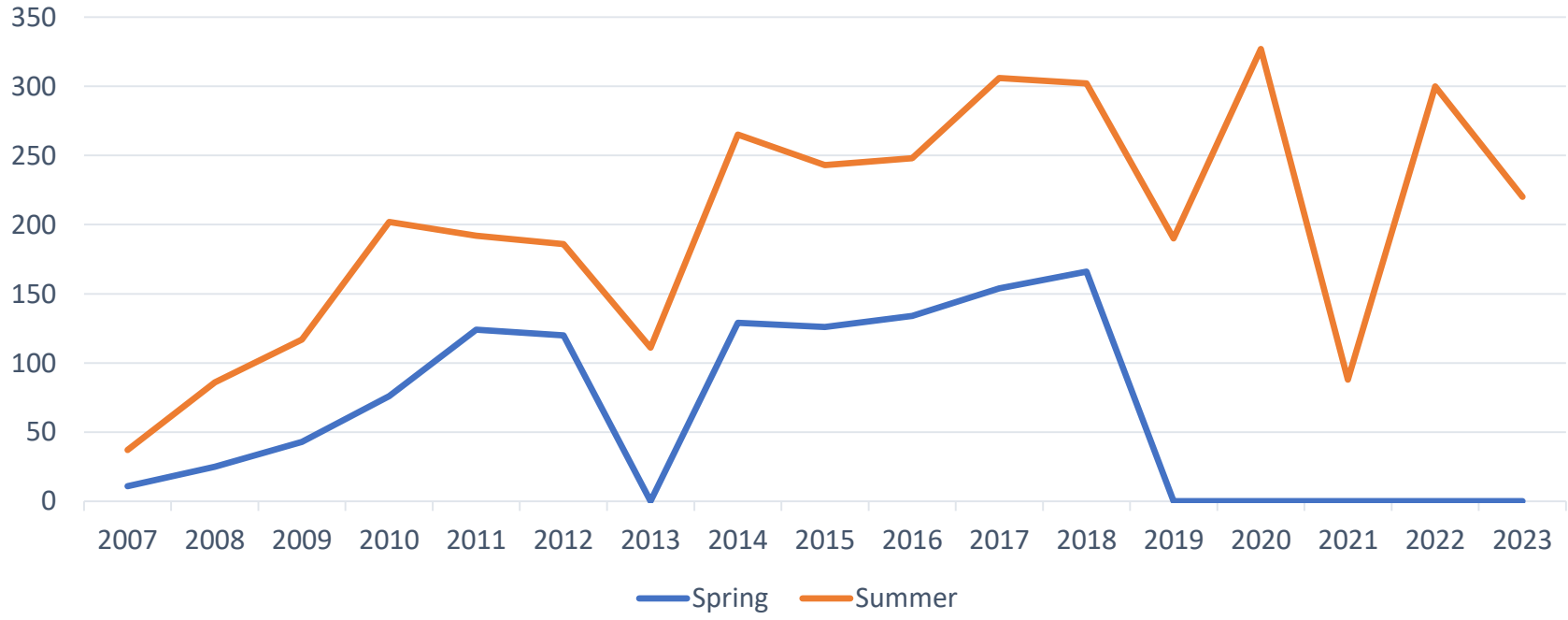


Red Grouse



The
Irish Grouse
Conservation
Trust

IGCT SPRING/SUMMER GROUSE COUNT 2007-2023

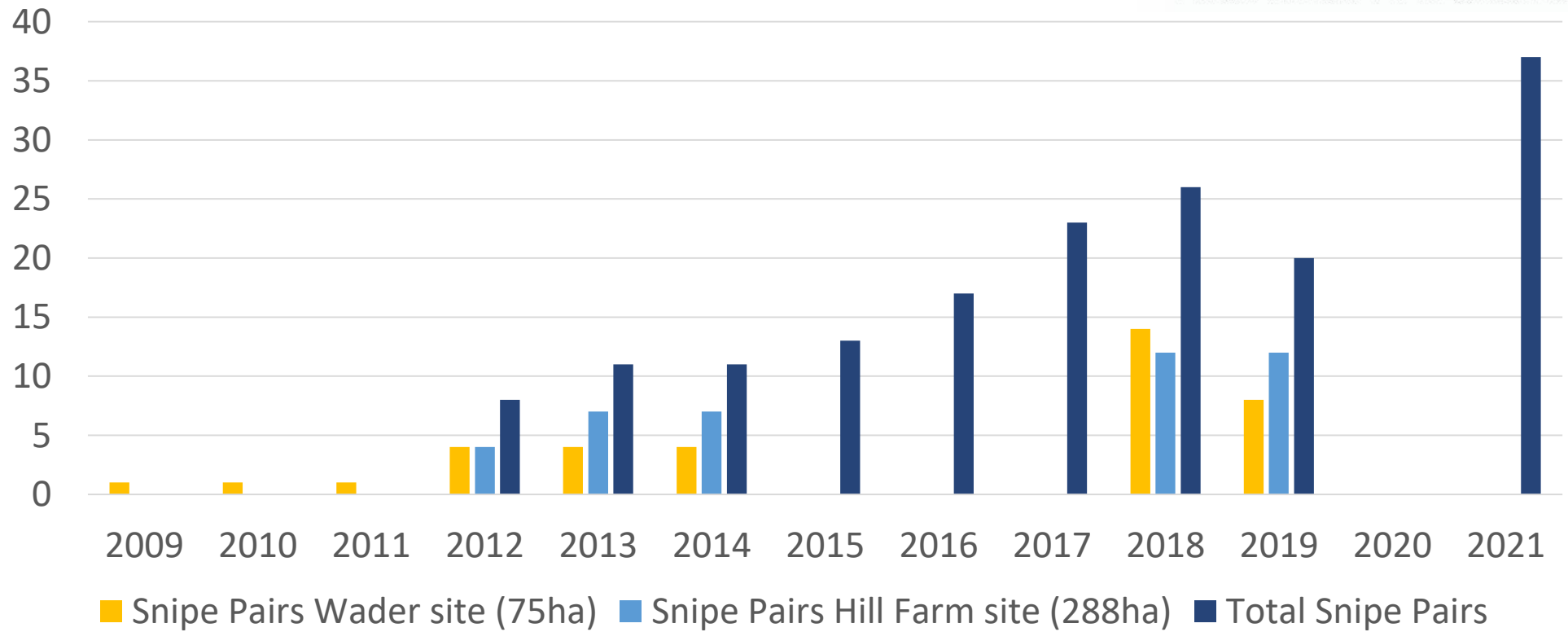


Snipe



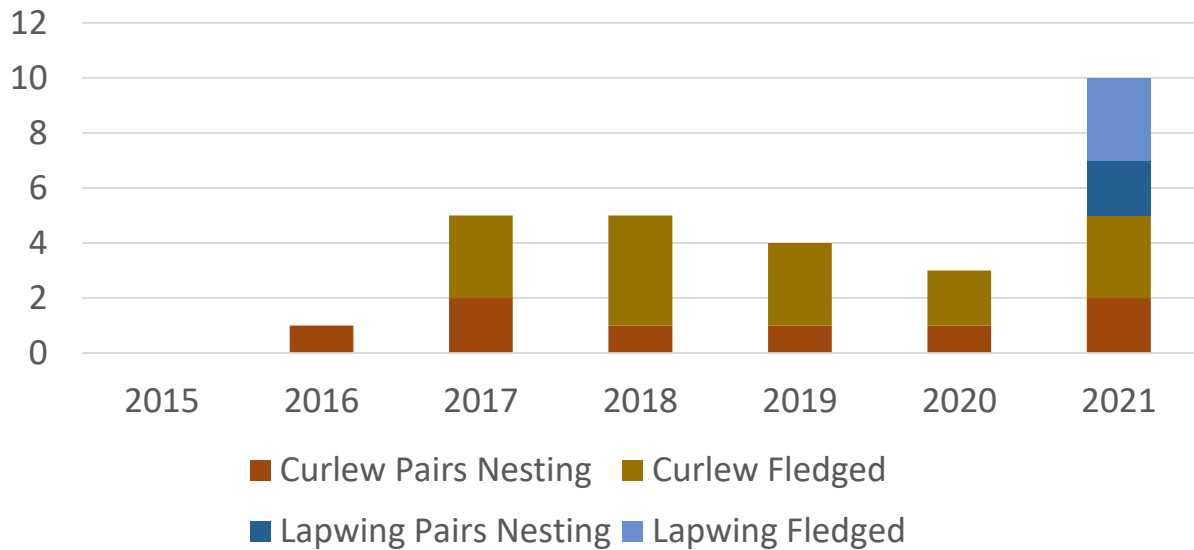
 giving nature a home
Northern Ireland

CAFRE Hill Snipe Pairs 2009-2021





CAFRE Hill Curlew & Lapwing 2009-2021



CAFRE Hill Skylark & Meadow Pipit 2011-2021

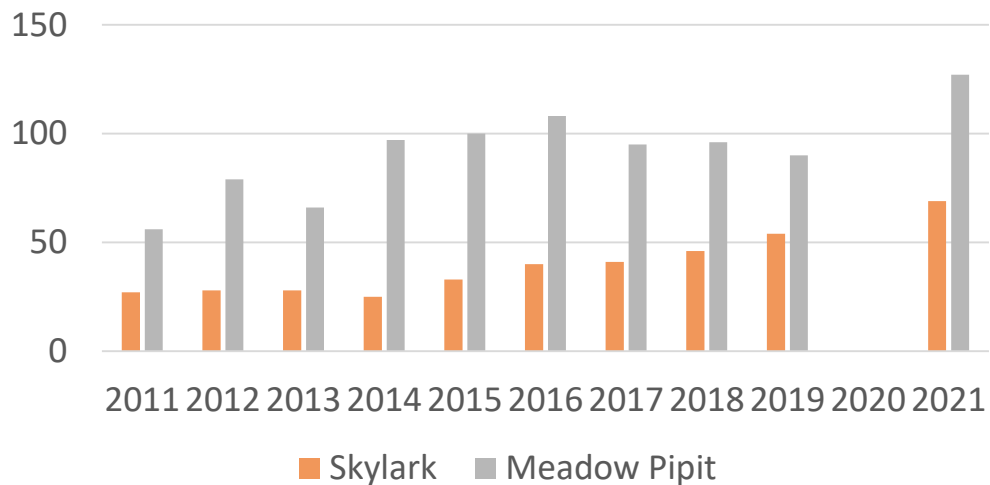
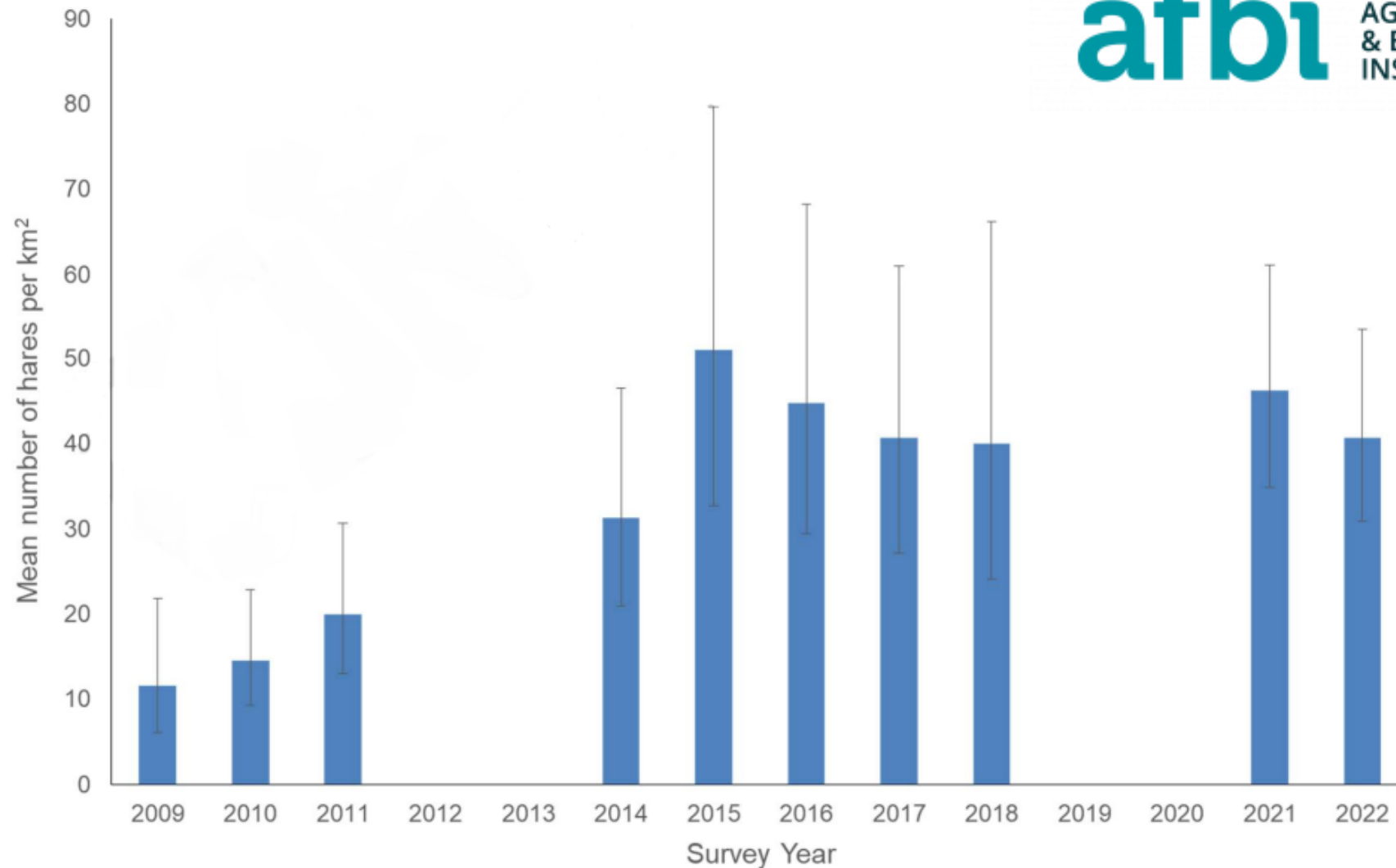


Photo courtesy of Neal Warnock

Mean density estimates for Irish hares in Glenwherry study site



Photos. I. Montgomery



Technologies to increase Biodiversity



1. Forest to Bog



2. Virtual Fencing



3. Water Resource



Forest to Bog



Trees removed late 2019

- 1. In
- 2. R
- 3. M



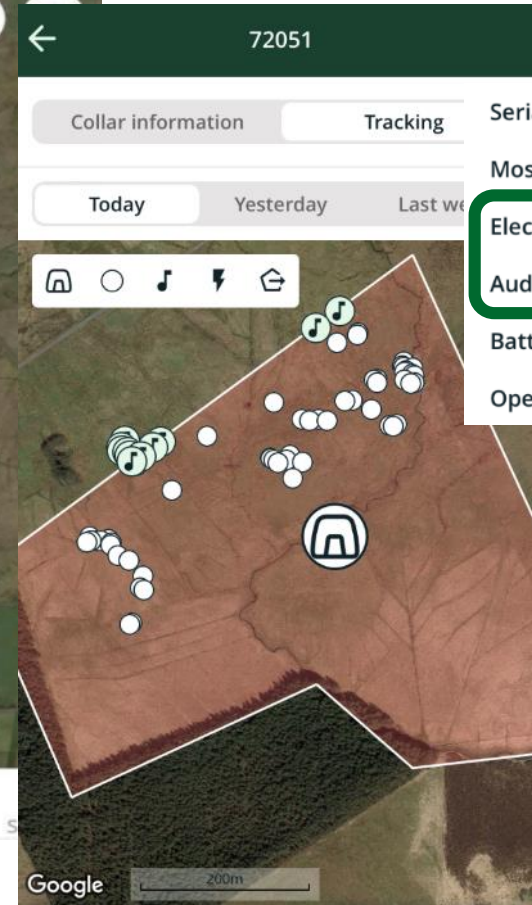
al
a
20



August
2022



Virtual Fencing



Serial number:	72051
Most recent report:	11 minutes ago
Electric pulses today:	0
Audio warnings today:	11
Battery status:	54%
Operating mode:	On





Benefits of winter grazing:

- Saving in winter silage
- Reducing NH³ emissions by 10 – 20% of herd
- Improving cow fitness for calving
- Improved habitat condition



Water Resource



July 2021



Department of
**Agriculture, Environment
and Rural Affairs**

www.daera-ni.gov.uk

Challenges

- Heavy resource
- Sensitivity of publicizing and promoting the work
- Compromise



Latham





View all presentations at
www.teagasc.ie/uplands