



Lead and support the transition of Irish farming towards more sustainable farming systems

**SIGNPOST**  
Farmers for Climate Action

# Signpost Partners

62 partners



## Partners



## Government, State Agencies and Sponsors



## Supporters



+ Drinks Ireland, Diageo, Heineken, Irish Distillers and William Grant & Sons





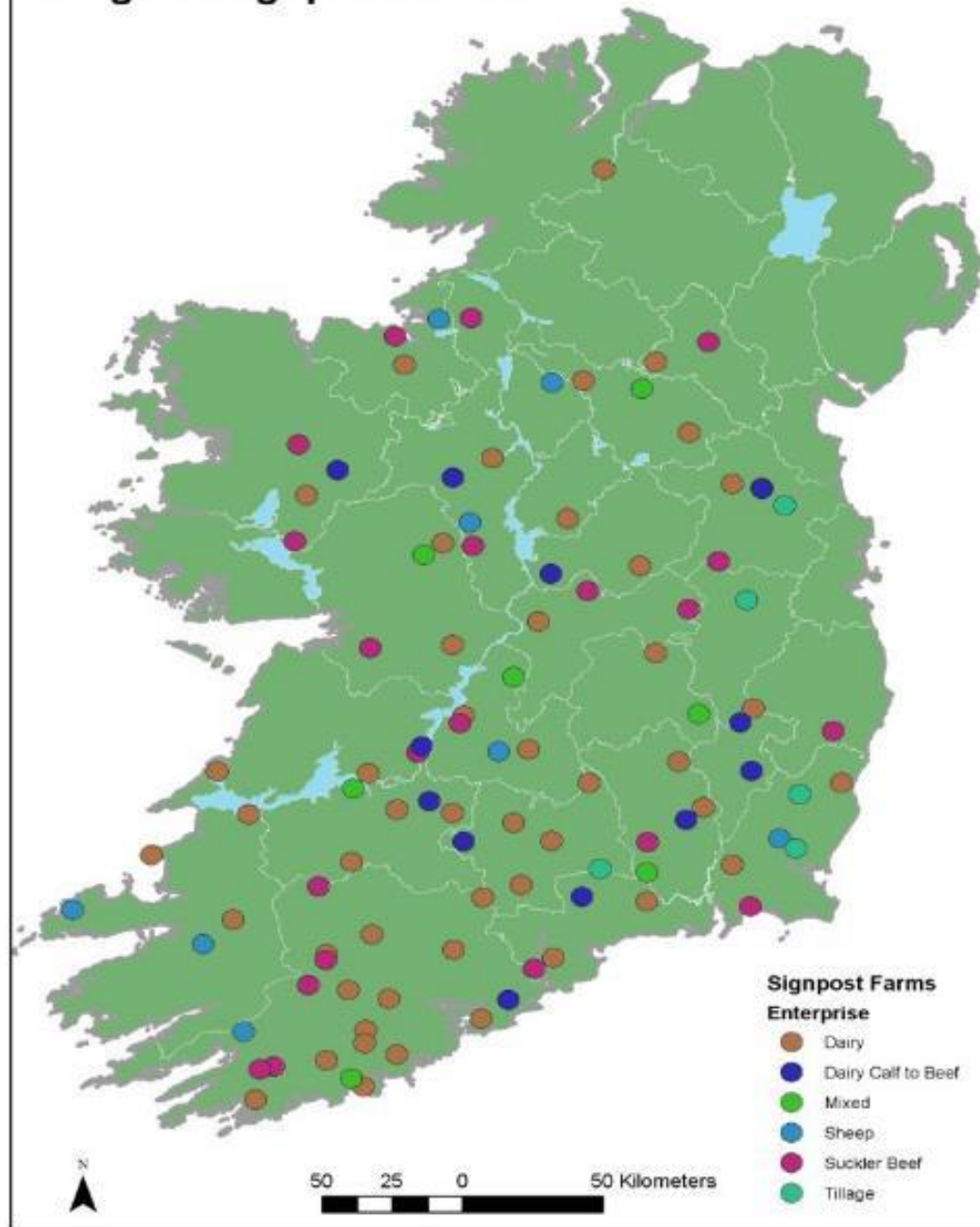
Signpost  
Programme

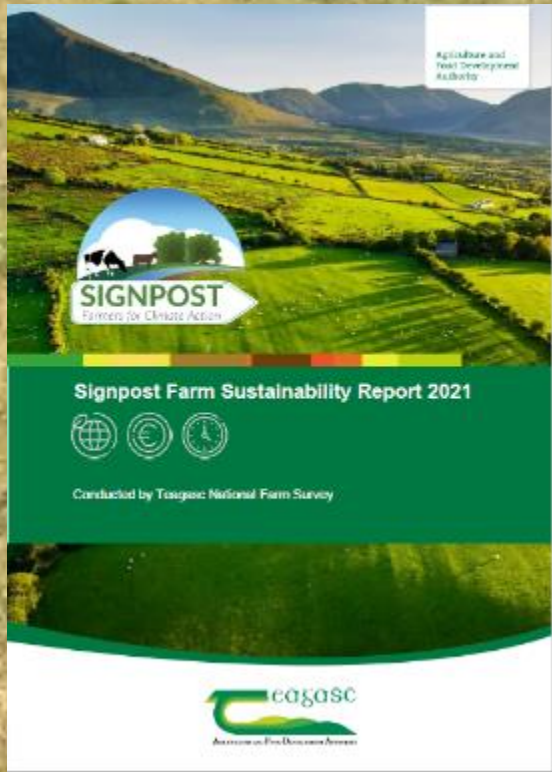
Signpost  
Farms

Signpost  
Advisory

NASCO  
(and other on-farm  
research)

# Teagasc Signpost Farms





# Signpost Dairy Farms Sustainability Performance 2021

45 dairy farmers – source: Teagasc National Farm Survey



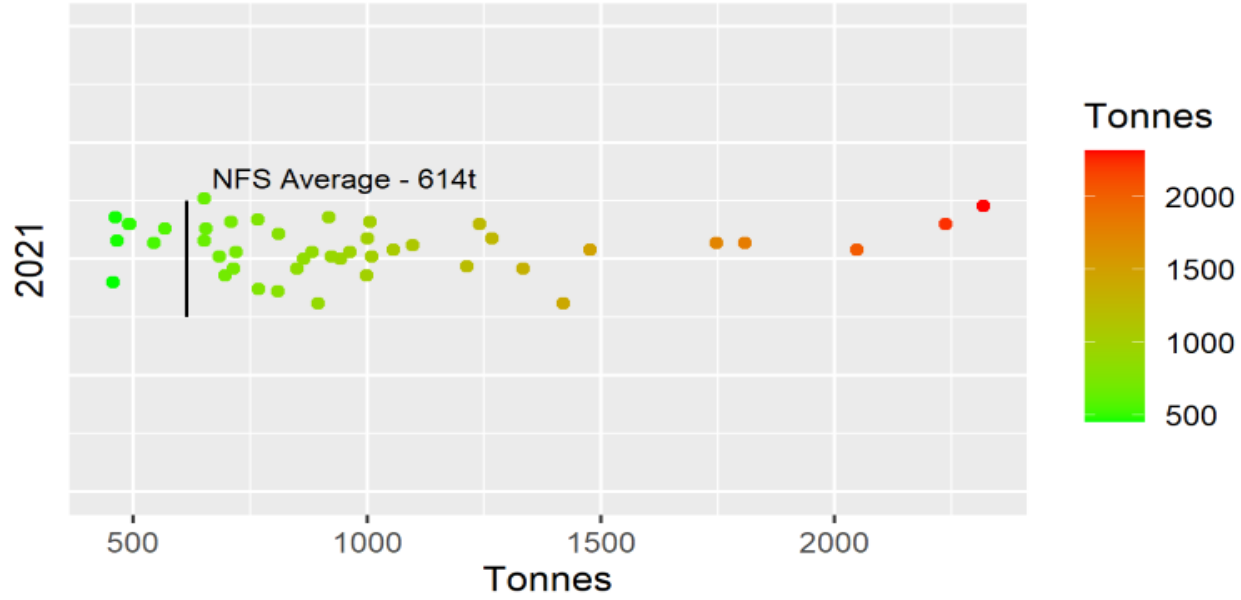
988 tonnes CO<sub>2</sub>-eq\* per farm  
0.93kg CO<sub>2</sub>-eq per kg FPCM (LCA)+

€	Milk solids (kg/cow)	Herd EBI (€)	Chemical nitrogen (N) use (kg/ha)	N use efficiency (%)	N spread as protected urea (%)	Slurry applied by LESS (%)	Slurry applied January to April (%)
Family farm income (€/ha)	Milk solids (kg/cow)	Herd EBI (€)	Chemical nitrogen (N) use (kg/ha)	N use efficiency (%)	N spread as protected urea (%)	Slurry applied by LESS (%)	Slurry applied January to April (%)
2,055	490	162	197	28	40	92	80

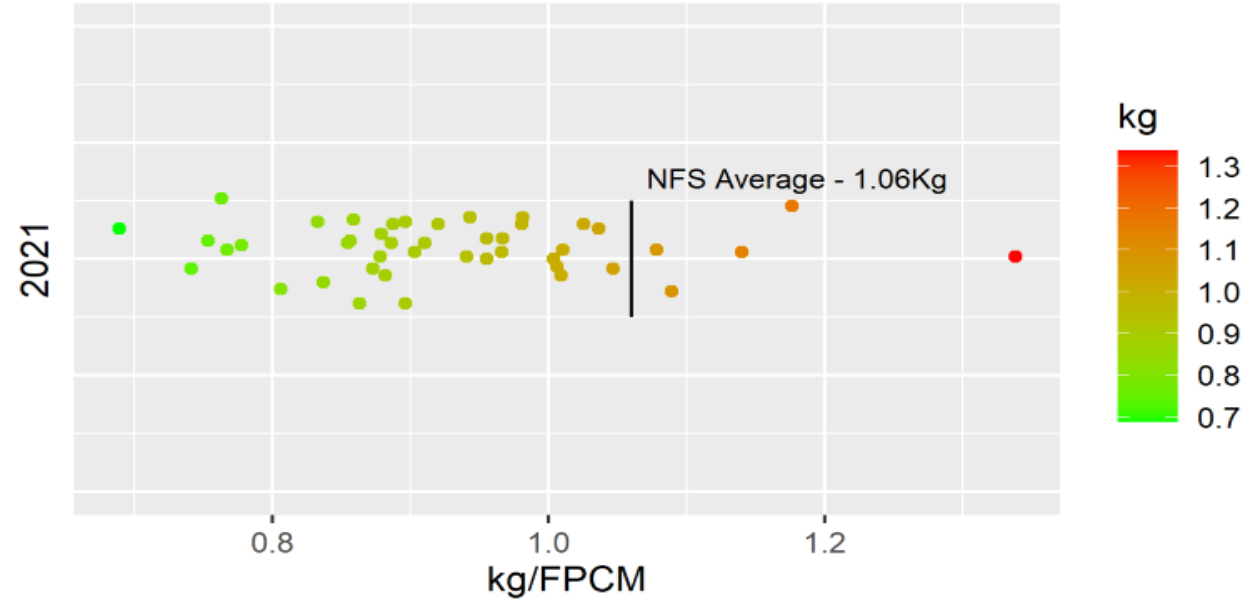
\*Carbon dioxide equivalent. + Fat- and protein-corrected milk life cycle assessment.

# Signpost Environmental Sustainability KPIs - Dairy

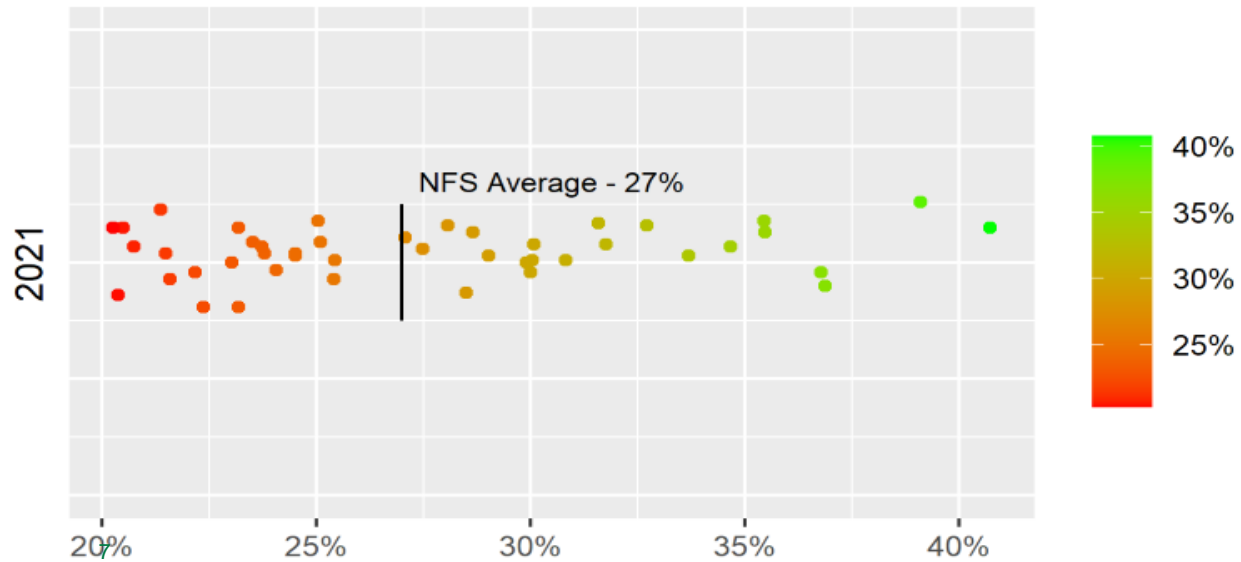
## Total On-Farm GHG emissions



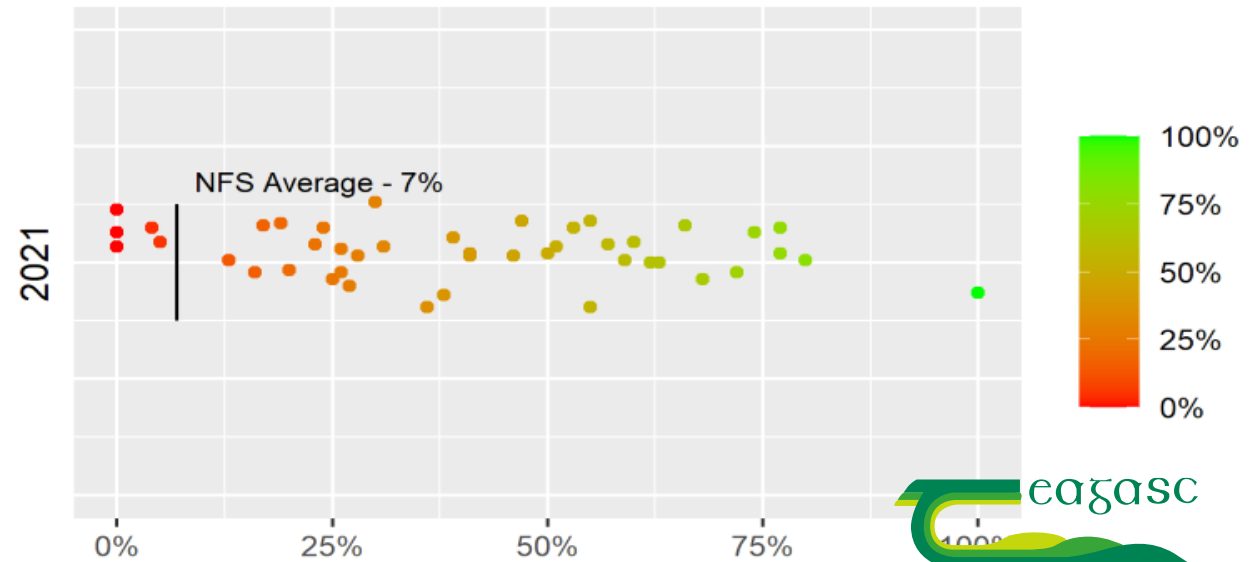
## GHG emissions per kg FPCM (LCA)



## Nitrogen Use Efficiency %



## % of Chemical N as Protected Urea

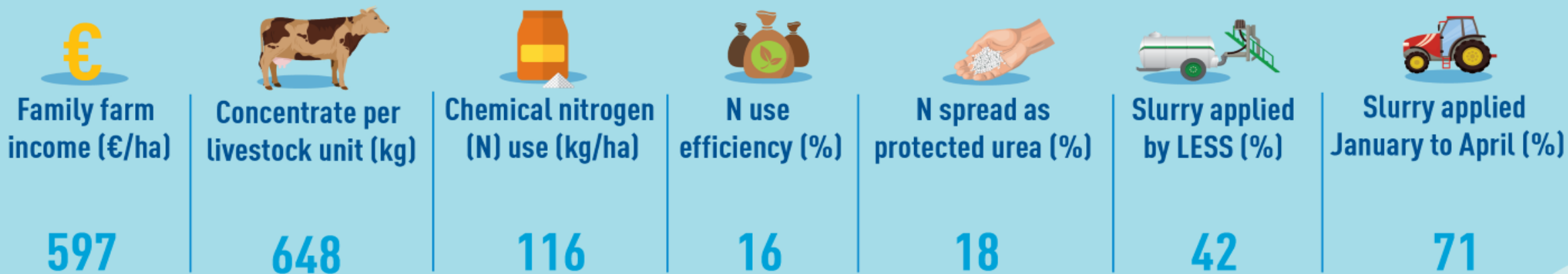


# Signpost Beef Farm Sustainability Performance 2021

35 beef farmers – source: Teagasc National Farm Survey



429 tonnes CO<sub>2</sub>-eq\* per farm  
9.2kg CO<sub>2</sub>-eq per kg liveweight (IPCC)+

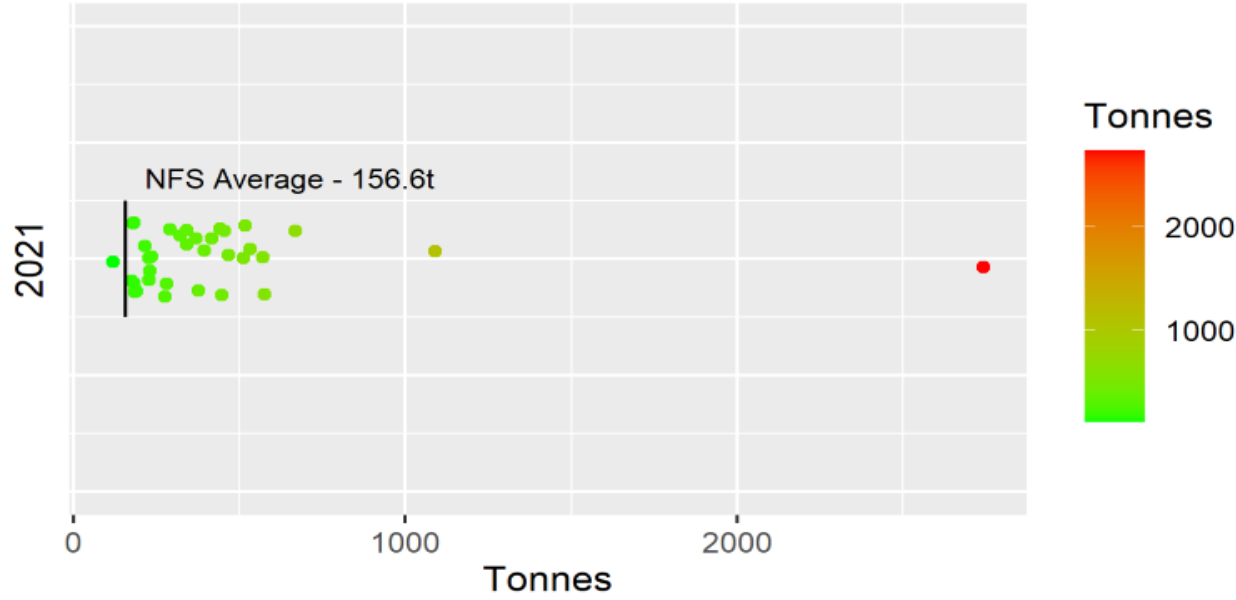


\*Carbon dioxide equivalent. +Intergovernmental Panel on Climate Change.

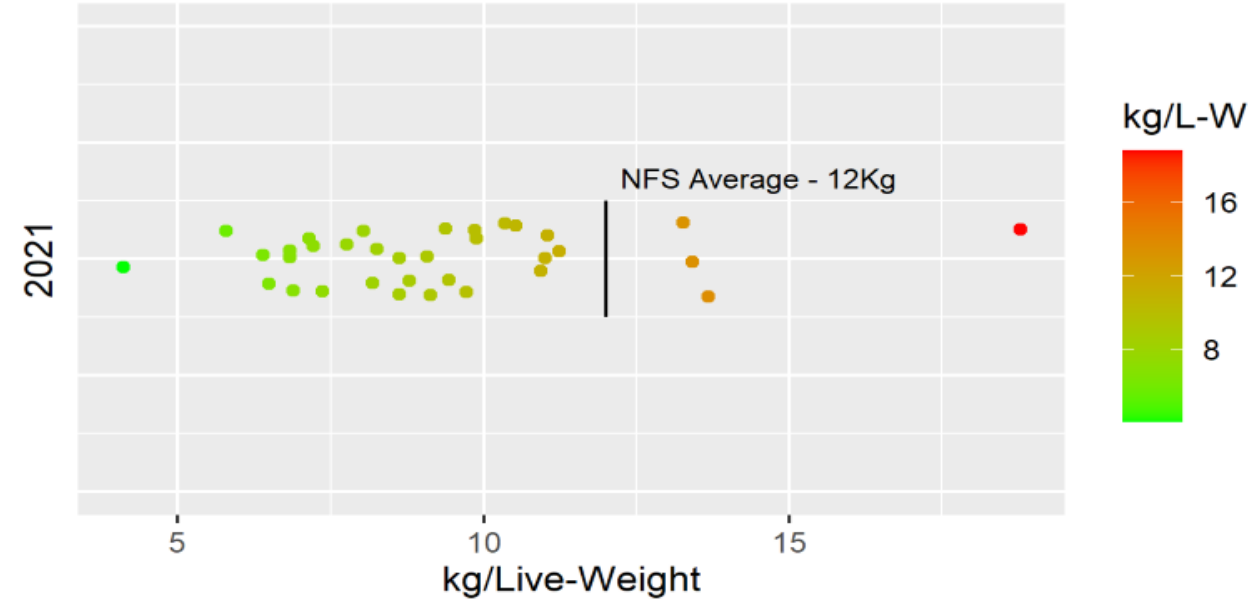


# Signpost Environmental Sustainability KPIs - Beef

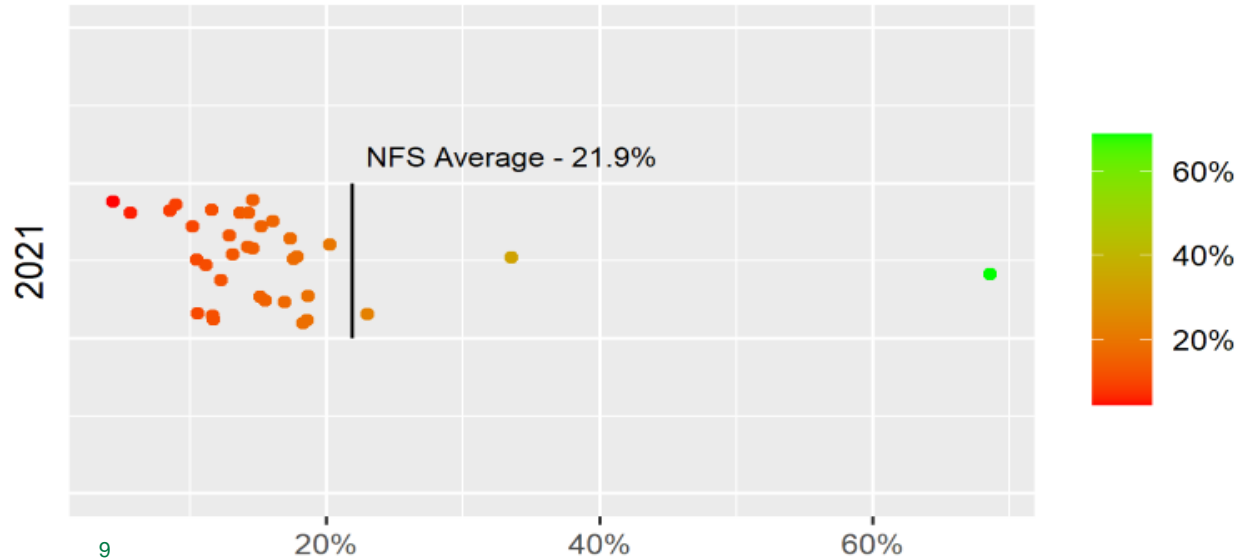
## Total On-Farm GHG emissions



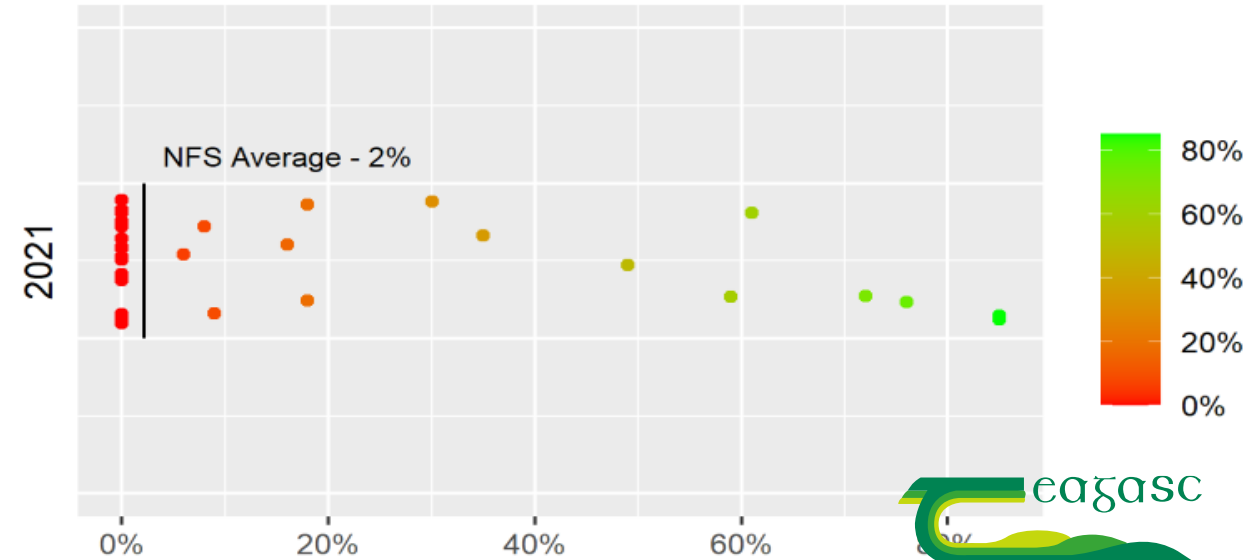
## GHG emissions per kg Live-weight (IPCC)



## Nitrogen Use Efficiency %



## % of Chemical N as Protected Urea



# Signpost Sheep Farm Sustainability Performance 2021

Eight sheep farmers – source: Teagasc National Farm Survey



245 tonnes CO<sub>2</sub>-eq\* per farm  
11kg CO<sub>2</sub>-eq per kg liveweight (IPCC)+



Family farm  
income (€/ha)

613



Weaning rate  
(lambs per ewe)

1.29



Chemical  
nitrogen (N)  
use (kg/ha)

78



N use  
efficiency  
(%)

19



N spread as  
protected urea (%)

18



Slurry applied  
by LESS (%)

50



Slurry applied  
January to  
April (%)

25

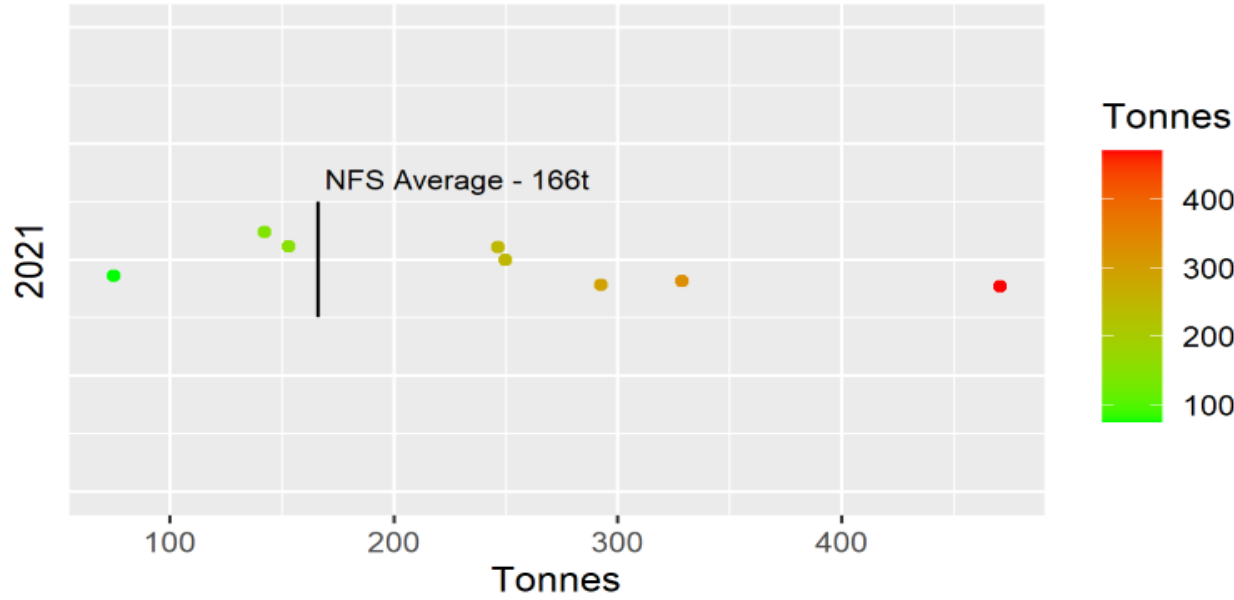
\* Included in the eight Signpost sheep farmers are two hill sheep farmers.

\*Carbon dioxide equivalent. +Intergovernmental Panel on Climate Change.

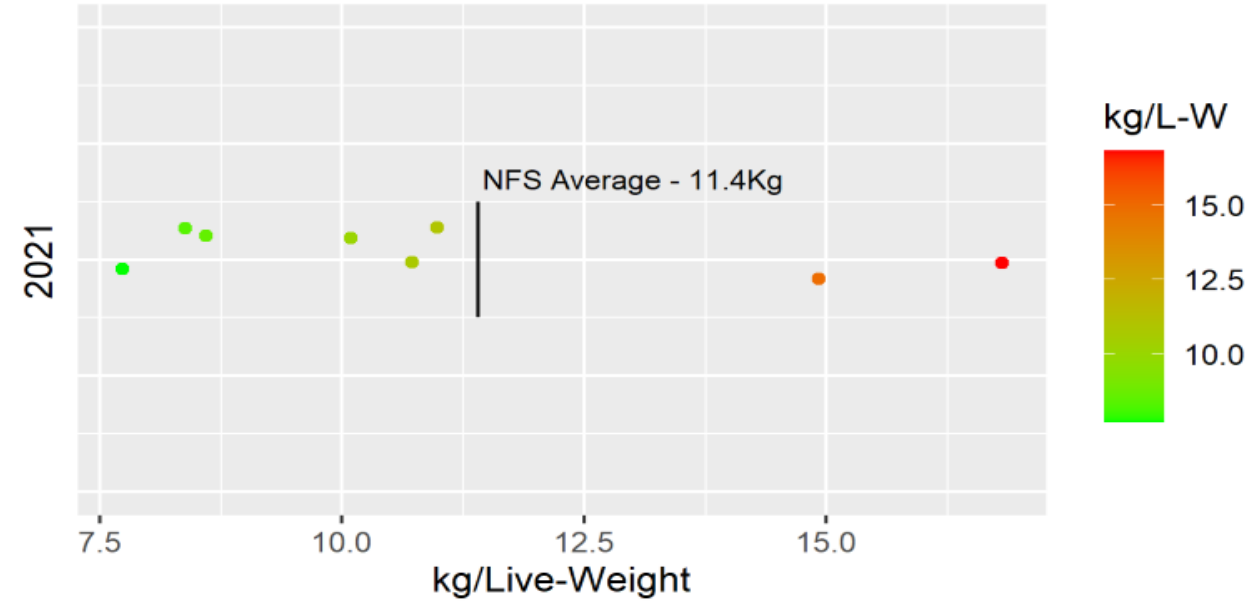


# Signpost Environmental Sustainability KPIs - Sheep

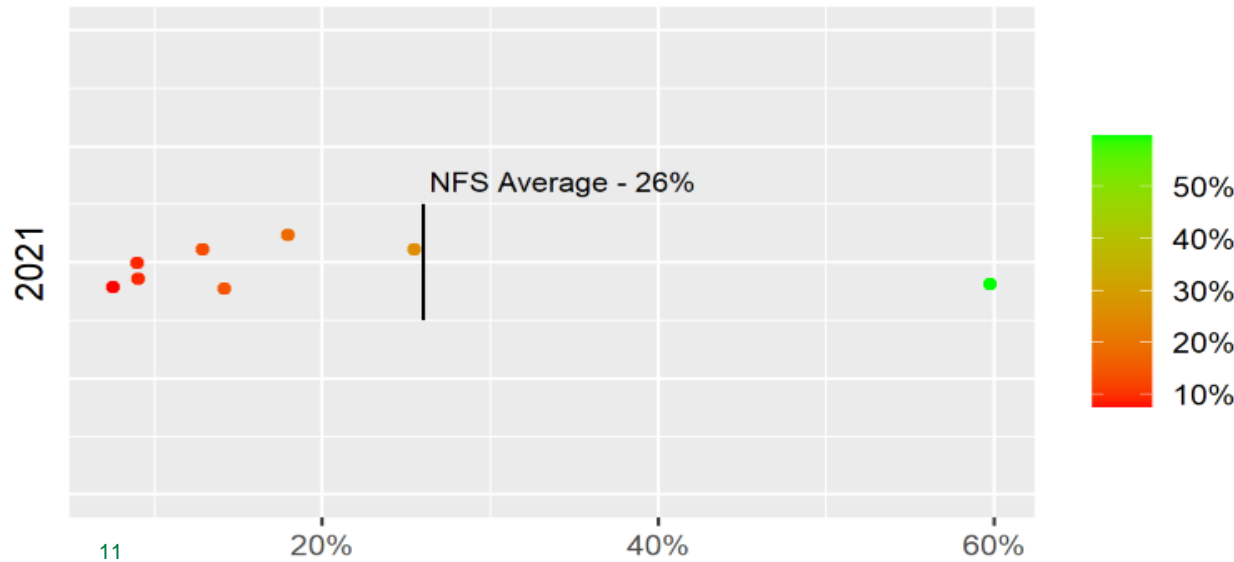
## Total On-Farm GHG emissions



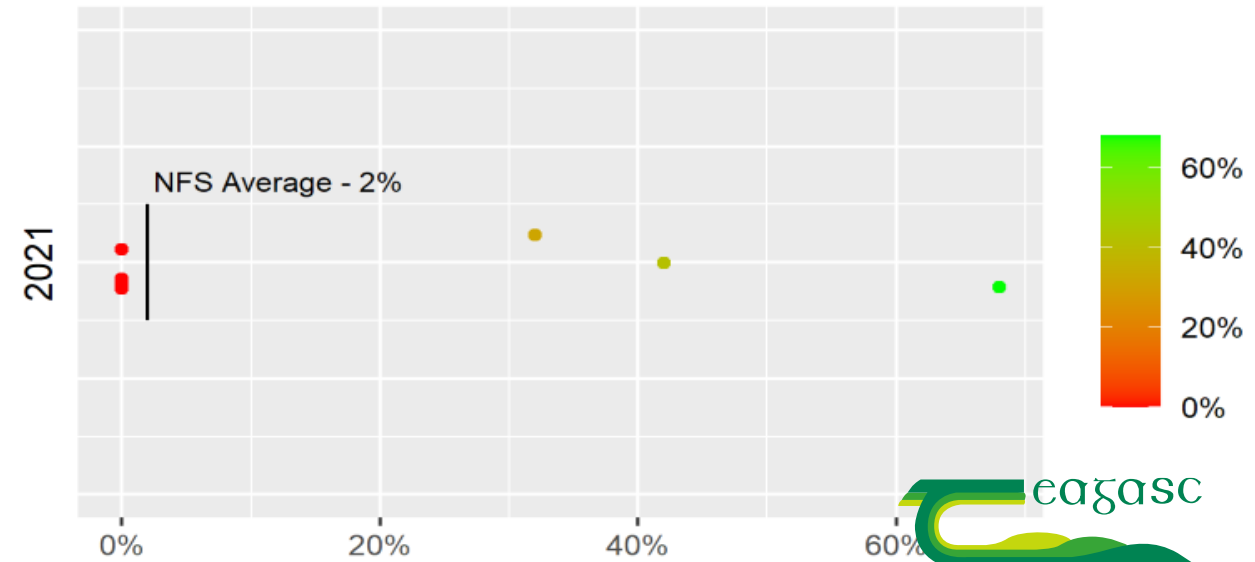
## GHG emissions per kg Live-weight (IPCC)



## Nitrogen Use Efficiency %



## % of Chemical N as Protected Urea



# Signpost Tillage Farms Sustainability Performance 2021

Six tillage farmers – source: Teagasc National Farm Survey



188 tonnes CO<sub>2</sub>-eq\* per farm

€  
Family farm  
income (€/ha)

1,174

  
Spring barley  
yield (t/ha)

8.2

  
Winter barley  
yield (t/ha)

9.7

  
Winter wheat  
yield (t/ha)

11.1

  
Chemical  
nitrogen (N) use  
(kg/ha)

138

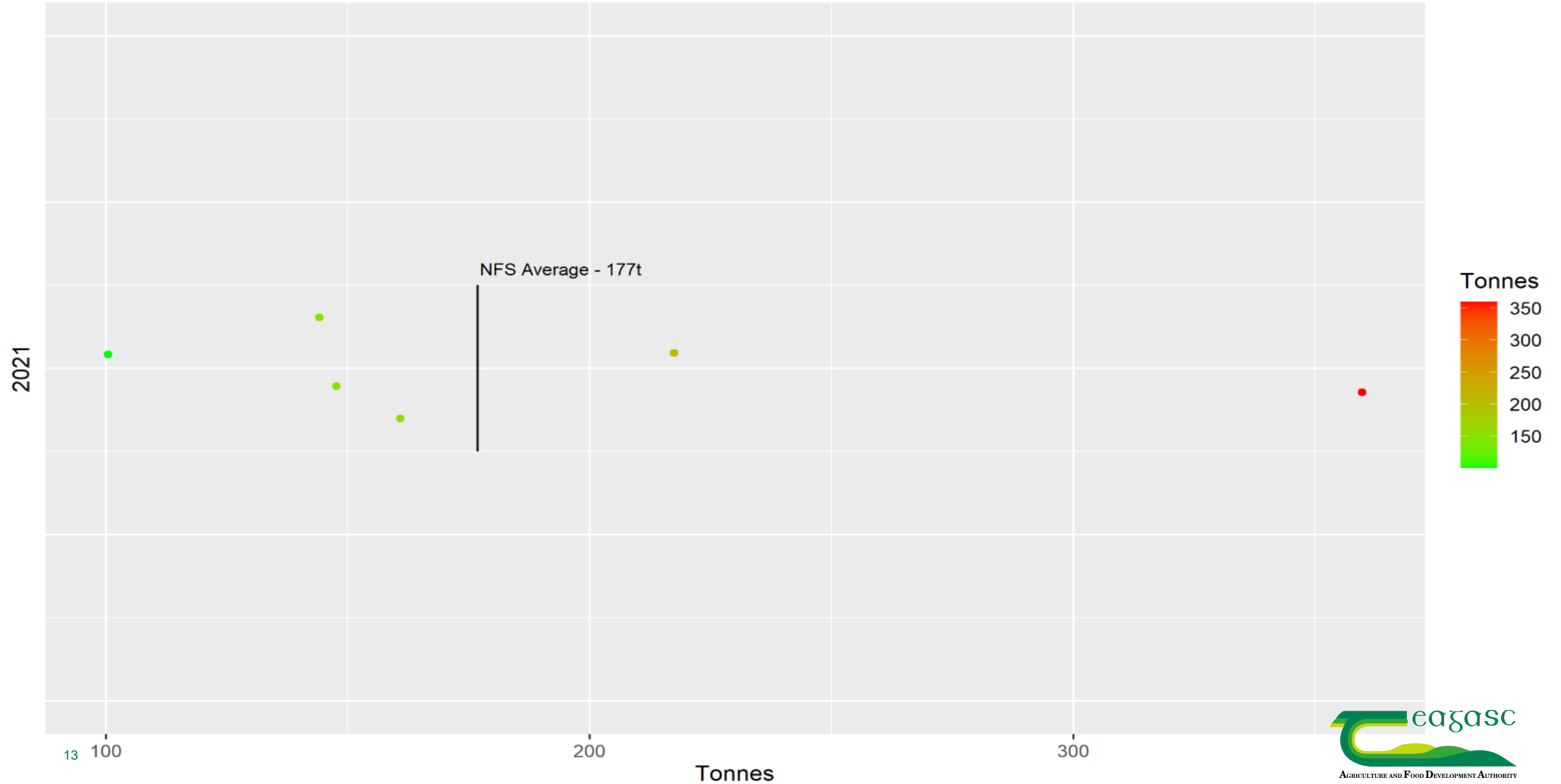
  
Spring ground  
with catch crops (%)

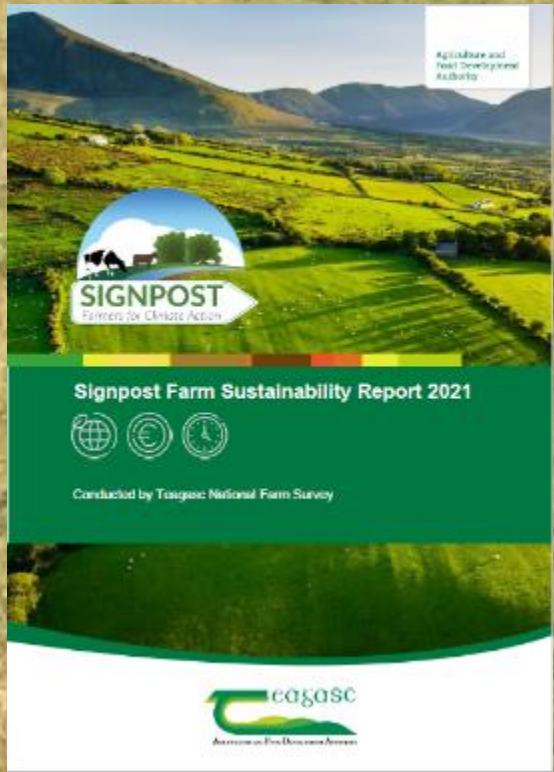
35

\*Carbon dioxide equivalent

# Signpost Environmental Sustainability KPI - Tillage

Total On-Farm GHG emissions

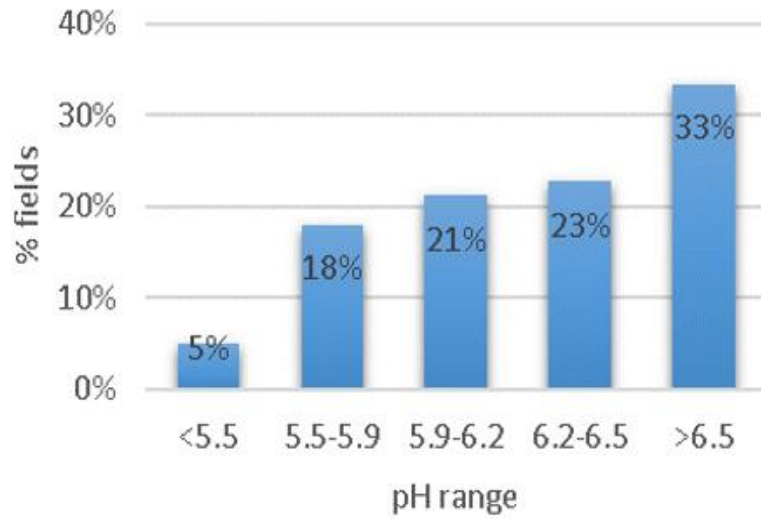




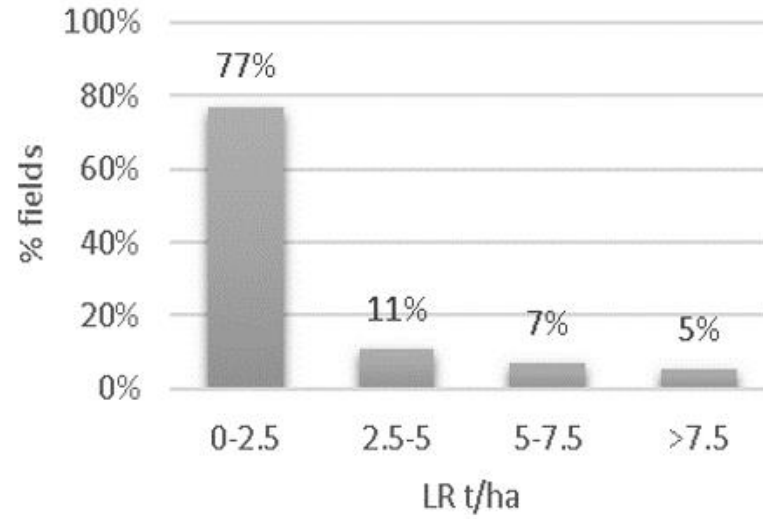
# National Agricultural Soil Carbon Observatory (NASCO)



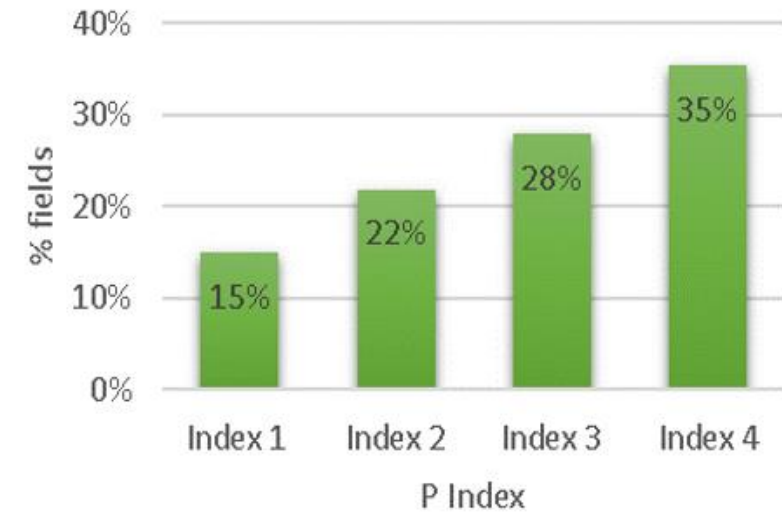
## pH



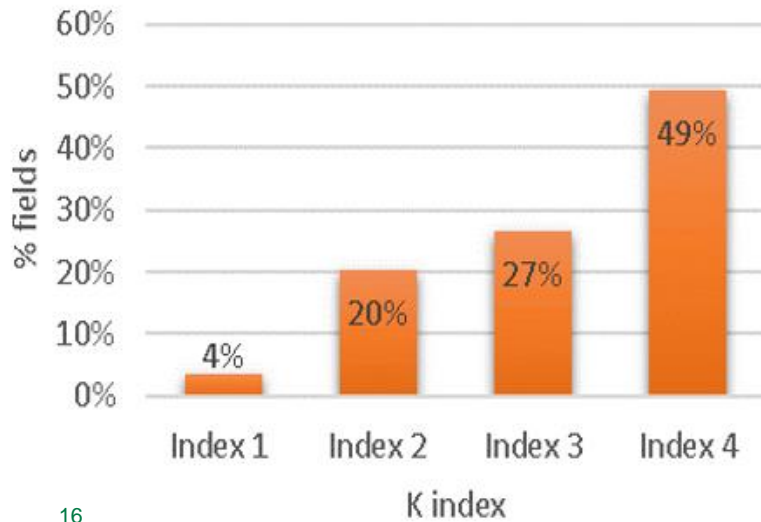
## Lime Requirement



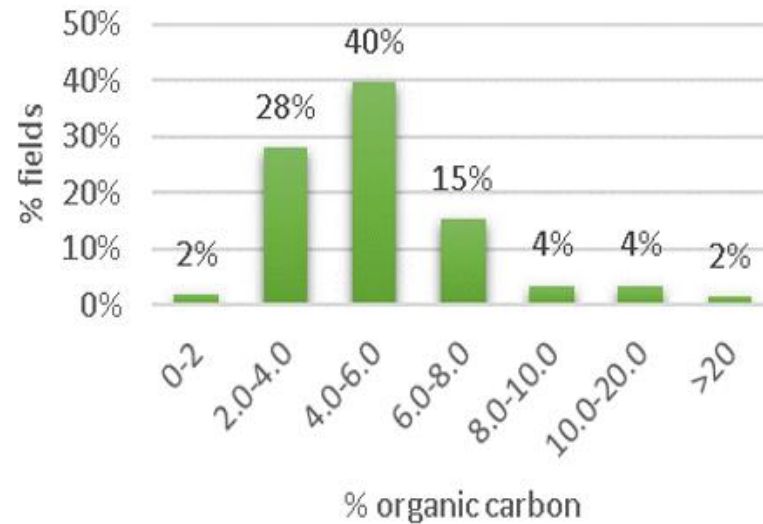
## P Index



## K Index



## Soil Organic Carbon



## Production optimised Fertility Soil pH >6.3, P & K Index 3 & 4

