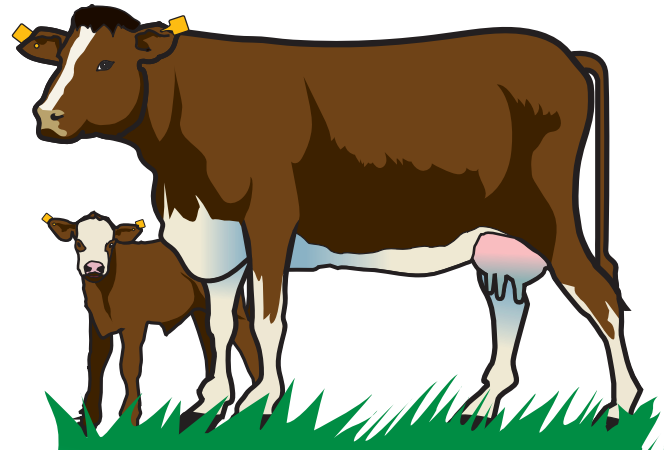


Where are you on the 12 Steps to reduce Gaseous Emissions on YOUR FARM?



Action needed

12. Incorporate clover



Include clover in all reseeding mixtures (5 kg/ha/ 2 kg/ac) and consider oversowing clover in suitable fields

11. Reduce age at slaughter by 1 month

Aim for a combination of improved beef genetics, better grassland management and better health management

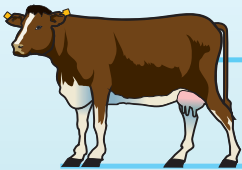


10. Reduce age at first calving

Calve heifers at 22 to 26 months and aim for 20% replacement rate

9. Increase calf output/cow

Improve calving rate by keeping records, creating a breeding season plan and culling poor/empty cows



8. Improve suckler herd quality

Select 4 and 5 star beef sires on replacement/terminal indicies



7. Improve animal health

Create a herd health plan, including an annual vaccination plan, in consultation with your vet

6. Better grassland management

Install paddock infrastructure, walk farm weekly and extend grazing season



5. Reduce chemical N by 10kg/ha



Apply lime, incorporate clover and make best use of slurry / FYM



4. Use 100% LESS

Apply slurry in spring / early summer using Low Emission Slurry Spreading Technology (LESS)



3. Build or maintain soil fertility

Continue to use P & K fertilisers such as 18:6:12



2. Apply lime

Identify fields low in pH using soil analysis and apply lime to correct deficiency

1. Use protected urea



Apply protected urea instead of CAN/straight urea